



THE BEST OF THE BREEDS

*17th Annual
Bull Sale*

Sunday, March 28, 2021

Sale Time: 1:30 p.m.

Heartland Livestock Services • Yorkton, SK

Red Angus • Black Angus • Charolais • Simmental • Gelbvieh

Twin Heritage Farms • Black Ridge Angus Farm • Harcourt Charolais • Dogpatch Acres • Forden Fairview Farm • Goodview Gelbvieh



THE BEST OF THE BREEDS

17th Annual Bull Sale

Sunday, March 28, 2021 • Sale Time: 1:30 p.m.

Heartland Livestock Services • Yorkton, SK

Brought to you by:

Twin Heritage Farms

The Kereluiks
Box 278
Sheho, SK S0A 3T0
Allan & Ann
Mitch: 306-272-7501
Michael: 306-220-1976
twin.heritage@sasktel.net
www.twinheritage.com

Dogpatch Acres

Michael & Annette,
Evan & Carley Zentner
Box 44
Leroy, SK S0K 2P0
Phone: 306-287-4008
Cell: 306-287-8180
Fax: 306-287-3199
m.zentner@bogend.ca
www.dogpatchacres.com

Black Ridge Angus Farm

John & Bonnie Moleski
Steve & Violet Moleski
Box 114
Dysart, SK S0G 1H0
Steve P/F: 306-432-4417
John: C: 306-331-7787
blackridge.angus@sasktel.net
"Raising Registered Angus Since 1957"

Forden Fairview Farm

Lyle & Leanne Forden
Ken & Twila Forden
Box 477
Punnichy, SK S0A 3C0
Lyle Cell: 306-290-5953
forden@sasktel.net

Harcourt Charolais

Doug & Tammy Harcourt
Box 637
Quill Lake, SK S0A 3E0
Doug's Cell: 306-383-7068
Justin's Cell: 306-383-7168
d.t.harcourt@sasktel.net
www.harcourtcharolais.com

Goodview Gelbvieh

Blair, Lorie,
Courtney & Kelsey Bentz
Box 430
Punnichy, SK S0A 3C0
Cell: 306-746-8037
blbentz@sasktel.net

Can't make it to the sale? Internet Bidding Available.

To view this sale visit www.dlms.ca, Fill out the registration form located under registration and sign-up for your free user account and select a username and password.

BIDDERS - To be approved as a bidder, Log in to dlms.ca and click BUYER APPROVAL tab, select the sale you are interested in bidding at and click sign up.

For more information

Call DLMS Reps:

Mark Shologan - 780-699-5082 or
DLMS Purebred Team 780.991-3025

DLMS
www.dlms.ca



Selected by many - Supplied by few

Bulls on Offer...

18 Yearling Black Angus
15 Yearling Red Angus
30 Red & White Charolais
33 Red, Black & Fleckvieh Simmental
16 Red & Black Gelbvieh

- All bulls are semen checked and veterinary inspected.
- Semen tests, all scrotals and weights will be available sale day.
- Half down on sale day with a May 1, 2021 post-dated cheque for the balance.
- Insurance available sale day.
- **Sight Unseen Purchase Program:** For those who cannot attend, we offer a Sight Unseen Purchase Program. Call us with your needs (birth weight, frame, weight, etc.) and we will recommend suitable bulls. We will deliver the bulls to you with a satisfaction guarantee. Your order will be handled in strict confidence. Call the owners, T Bar or any of the sale staff.
- **Right to Draw Semen:** In the event that we would like semen on any of the bulls selling, we reserve the privilege to draw semen in the off season at our expense for in-herd use only.

"Haul your own bull" \$100.00 off per bull

If you bring your own trailer and take your bull home, receive a \$100 credit off your purchase.

Or Pay \$100.00 upfront sale day and we will take the yearling bulls home, feed and deliver them by June 1, 2021.

Payable at the time of settlement.

All bulls to be taken home and boarded must be insured.

Note - All two year old bulls must go home with buyer after the sale unless prior arrangements have been made with the breeder.

- **Delivery:** We will assist in making transportation arrangements outside MB and SK. All costs are the responsibility of the buyer. You may be asked to take your bull early if the truck is in your area. Each animal becomes the risk of the purchaser as soon as sold.

Accommodations

Days Inn & Suites 306-782-3112
No.1 - 275 Broadway St E., Yorkton, SK

Sale Staff

Chris Poley, Auctioneer 306-220-5006

Shane Michelson 403-363-9973

T Bar C Cattle Co. Ltd.

Ben Wright 519-374-3335

T Bar C Cattle Co. Ltd.

Chad Wilson 306-577-1256

T Bar C Cattle Co. Ltd.

Helge By 306-536-4261

Charolais Banner

Sale Day Phone

Heartland Livestock Services: Office: 306-783-9437

Sale Management

T Bar C Cattle Co. Ltd. Office: 306-933-4200

523 Main Street, Box 2330 Fax: 306-934-0744

Warman, SK S0K 4S0

E-mail: info@tbarc.com

Visit www.tbarc.com

We invite you to join us

Sale starts at 1:30 pm

Please bring this catalogue with you sale day.



From the desk at T Bar...

Welcome to the 2021 edition of "Best of the Breeds", Sunday March 28, 2021 at Heartland Livestock Services, Yorkton, Saskatchewan. This is the 17th Annual... who would have thought back when Merv Schmidt (Belmont Charolais) did not want to halter break and sell bulls all spring, and started this event in Leross, that this bull sale would become one of, if not, the best multi-breed bull sales in the nation... yes, this sale has lived up to its billing!

The success of Best of the Breeds must be credited to these six breeding operations who each year upgrade their programs to offer a more improved, higher profit yielding product for the livestock industry. Many breeder bulls have been selected by purebred producers in Canada and south of the line. This year will be no different as the lineup of bulls is powerful and exciting. Whether you are looking for Red or Black Angus, Charolais, Gelbvieh or Red, Black, Fullblood or Fleck Simmental, the 112 bulls offer variety with quality. Do not overlook the fact that much of the sale offering is homo polled. We know many of you use at least two breeds in your breeding pastures so you can fulfil your breeding needs on one day, at one sale.... it is like a "bull depot!"

The bulls will be available for viewing the day prior at Heartland or stop by any of these herds to preview the sale offering. Feel free to give any of these progressive breeders a call to discuss their bulls and which would be suitable for your breeding situation. History has shown us that the bulls are affordable and get the job done, judging by the repeat customer base. Plan to be with us or online on the last Sunday in March!

If we may be of assistance, prior to or sale day, feel free to contact any of the T Bar team or myself, we will help you in a professional manner.

Chris Poley



Chris Poley
306-220-5006



Shane Michelson
403-363-9973



Ben Wright
519-374-3335

Twin Heritage Farms



Allan & Ann



Michael, Rebecca & Sons
306-220-1976



Mitch, Kelley & Karson
306-272-7501

Welcome to our 2021 edition of the annual "Best of the Breeds" Bull Sale. THANK YOU to our previous buyers and bidders and all those that have expressed interest in the Twin Heritage Farms program over the years.

We are pleased to be able to offer you another strong set of yearling bulls. The bulls we have on offer are backed by proven genetics and have been rigidly culled to ensure longevity and viability. Our cow herd has been selected with an emphasis on fertility, sound udder structure, and good feet. It is difficult to excel at all three of these key aspects, but we feel like we are making progress each year and our bull pen is scrutinized with a keen eye to ensure we are offering our best. The bulls are pail fed a customized bull developer ration to ensure responsible development and longevity. The weights provided are actuals with WW taken on August 29 and YW taken on February 14.

If you are not comfortable attending the sale in person due to COVID restrictions, please stop by the farm in advance of the sale or give one of us a call if you have any questions. We encourage you to check out our website at www.twinheritage.com for viewing of the bull sale videos. Also, head over to DLMS.ca if you have not already signed up to view and bid online.

The Kereluiks

"Add a Touch of Heritage to your Herd"

Red Angus Breed Averages

EPDS	CE	BW	WW	YW	MCE	MK
	2.6	1.1	36	62	5.4	23

REFERENCE SIRE – RED LAZY MC DETOUR 161D

Detour 161D continues to exceed our expectations of a herd bull and has left us a strong set of bulls and replacement females the last few years. The bulls are moderate built with good muscling and moderate birth weights. Backed by the exceptional dam, Detour 161D's daughters are moderate framed and good uddered. If you are looking for moderate framed bulls with good testicle development and moderate BW calving ease... check out the following sons.



Red Lazy MC Detour 161D



LDEL 2W
Sire of Detour



YY 701T
Dam of Detour



1

1

Red Twin Heritage **Detour 10H**

2185976 MTH 10H 15/01/2020

SIRE

DAM

RED LAZY MC CC DETOUR 2W RED FLYING K AMBUSH 121U
RED LAZY MC DETOUR 161D RED SSS BLOCKANNA 671X
RED YY PATTY 701T RED SSS BLOCKANNA 394S

BW	ACT. WW	ACT. YW
87	746	1234

EPDS	CE	BW	WW	YW	MCE	MK
	4.0	1.6	39	67	7.0	22



Dam:
Red SSS Blockanna 671X

Detour 10H is a smooth fronted bull with good eye appeal, length, and testicle development. His dam, 671X, was a former high selling bred heifer from the SSS herd and always raises a top end calf. She consistently breeds back early and has had six herd bulls averaging 92 lb. BWs and a weaning index of 103%.

Detour 48H is moderate framed and well muscled with a good foot. His dam is one of our cherished Zama Pine daughters; she is one that you would like to have a whole herd of. Detour 48H can be used on heifers and bulls and should leave a fine set of replacement females.



2 Red Twin Heritage **Detour 48H** 

2188318 KTH 48H 05/02/2020

SIRE
 RED LAZY MC CC DETOUR 2W
 RED LAZY MC DETOUR 161D
 RED YY PATTY 701T

DAM
 RED GEIS ZAMA PINE 123'03
 RED TWIN HERITAGE LINDO 31T
 RED TWIN HERITAGE LINDO 239R

	BW	ACT. WW	ACT. YW
	84	657	1104

EPDS	CE	BW	WW	YW	MCE	MK
	4.0	-0.9	27	44	1.5	21

3 Red Twin Heritage **Detour 49H**

2188319 KTH 49H 05/02/2020

SIRE
 RED LAZY MC CC DETOUR 2W
 RED LAZY MC DETOUR 161D
 RED YY PATTY 701T

DAM
 RED SSS GAME TIME 170Y
 RED TWIN HERITAGE RAVEN 16B
 RED TWIN HERITAGE RAVEN 54L

	BW	ACT. WW	ACT. YW
	82	694	1148

EPDS	CE	BW	WW	YW	MCE	MK
	4.0	-0.1	29	50	4.0	20

Detour 49H is another moderate framed, wide based, solid heifer bull candidate. His dam has averaged a BW of 78 lbs. on five calves to date.





4

Red Twin Heritage Detour 50H

2185978 MTH 50H 05/02/2020



SIRE

RED LAZY MC CC DETOUR 2W
RED LAZY MC DETOUR 161D
 RED YY PATTY 701T

DAM

RED TWIN HERITAGE SOLDIER 41Z
RED TWIN HERITAGE OWYHEE 21D
 RED YY OWYHEE 942W

BW	ACT. WW	ACT. YW
76	607	1035

EPDS	CE	BW	WW	YW	MCE	MK
	6.0	0.0	28	50	6.0	25

If you are looking for a heifer bull, Detour 50H could be a good option. Moderate framed, wide based and good footed with a dark red hair coat are what I noted on this bull. A full sibling to Detour 50H raised the MTH 3H (Lot 11) bull as a first calf heifer.

4



5

Red Twin Heritage Detour 63H

2185981 MTH 63H 13/02/2020



SIRE

RED LAZY MC CC DETOUR 2W
RED LAZY MC DETOUR 161D
 RED YY PATTY 701T

DAM

TER-RON MOTIVATOR 4B
RED TWIN HERITAGE RAVEN 15E
 RED TWIN HERITAGE RAVEN 38C

BW	ACT. WW	ACT. YW
85	685	1165

EPDS	CE	BW	WW	YW	MCE	MK
	-1.0	1.4	43	74	0.0	23

This moderate framed, exceptional footed bull comes from one of the elite cow families in our herd. His dam is a beautiful uddered Motive granddaughter tracing back to the solid Raven 54L cow. Maternal strength and fertility come through in the Raven cow family. Detour 63H was one of the highest indexing bulls for weaning at 111%.

5



6

Red Twin Heritage Detour 66H

2185983 MTH 66H 20/02/2020



SIRE

RED LAZY MC CC DETOUR 2W
RED LAZY MC DETOUR 161D
 RED YY PATTY 701T

DAM

RED HOWE HUSTLE 13X
RED TWIN HERITAGE NAVANNA 5A
 RED TWIN HERITAGE NAVANNA 2U

BW	ACT. WW	ACT. YW
84	605	1055

EPDS	CE	BW	WW	YW	MCE	MK
	3.0	0.5	26	47	4.0	23

Detour 66H is a full brother to Detour 33G which was one of our high sellers last year to Addis Farm Ltd. His dam is a big ribbed, great uddered cow that stands out in the herd. Knowing how consistent the Navanna cow family has been throughout the years, 66H is one to look for come sale day.



Dam:
Red Twin Heritage Navanna 5A



Red Twin Heritage Detour 24F



REFERENCE SIRE – RED TWIN HERITAGE DETOUR 24F

Detour 24F is a home raised bull that we are keen on. We had planned to sell him in our sale a few years back but decided to keep him for use in our herd. His pedigree is stacked with some of the top bulls we have used over the years and his dam has a beautiful udder and impeccable foot. If you stop by the farm, I invite you to look at his feet; hands down one of the best footed Red Angus bulls that we have seen in awhile. He adds a bit more power and frame than the old Detour bull but checks the box on the type of bull we are striving to raise for our customers.

Red Twin Heritage Detour 24F Feet

7

Red Twin Heritage Detour 1H

Applied For KTH 1H 01/01/2020

SIRE

DAM

RED LAZY MC DETOUR 161D RED TER-RON TRIGGER 80B
RED TWIN HERITAGE DETOUR 24F RED TWIN HERITAGE RAVEN 15F
 RED TWIN HERITAGE LAKOTA 64D RED TWIN HERITAGE RAVEN 16B

BW	ACT. WW	ACT. YW
78	755	1300

PE	CE	BW	WW	YW	MCE	MK
	1.5	0.8	30	58	1.0	25

Detour 1H is a thick, well muscled, performance bull with a very appealing 78 lb. BW. His sire has passed along his exceptional dark foot to his sons as well as the daughters that we have retained. 1H could be that dual-purpose bull to use on cows or larger framed heifers.



7

8

Red Twin Heritage Detour 8H

Applied For KTH 8H 12/01/2020

SIRE

DAM

RED LAZY MC DETOUR 161D RED TER-RON TRIGGER 80B
RED TWIN HERITAGE DETOUR 24F RED TWIN HERITAGE RAVEN 57F
 RED TWIN HERITAGE LAKOTA 64D RED TWIN HERITAGE RAVEN 56A

BW	ACT. WW	ACT. YW
90	816	1289

PE	CE	BW	WW	YW	MCE	MK
	-3.0	2.3	32	62	-1.5	23

These two 24F sons are similar in style and performance. Deep red in color, thick, and performance minded. Both dams are Trigger 80B daughters and this combination of Detour 24F and Trigger seems to be working well.



8

9

Red Twin Heritage Detour 23H

Applied For MTH 23H 24/01/2020

SIRE

DAM

RED LAZY MC DETOUR 161D RED FEDDES BIG SKY R9
RED TWIN HERITAGE DETOUR 24F RED TER-RON GOLDIE 123A
 RED TWIN HERITAGE LAKOTA 64D RED TER-RON GOLDIE 71U

BW	ACT. WW	ACT. YW
96	765	1328

EPDS	CE	BW	WW	YW	MCE	MK
	-1.0	1.4	43	71	-3.0	23

Detour 23H is one that you will notice in the pen; dark red, deep muscled, and powerful. Detour is backed by one of the most well known cow families in the breed. His dam, Goldie 123A had a previous high selling 73 lb. heifer bull to Chad and Vern Burbach a few years ago. She is a model Angus cow and backed by the calving ease sire, Feddes Big Sky. If you buy your bulls on the strength of the cow family, 23H is backed by a good one.



9



Red JLL Final Deal 78Z



JLL 4W
Dam of Final Deal



RCMP 7P
Granddam of Final Deal

REFERENCE SIRE – RED JLL FINAL DEAL 78Z

We found ourselves in a bit of a bind a few years ago when we unexpectedly lost three herd bulls. It was clear that we needed a mature bull to breed and walk our pastures. Fortunately, we were able to purchase an interest and walking rights on 78Z from Wraz and Brylor. Both Phil and Bryan have written volumes on how impressed they are with Final Deal's breeding ability, flawless movement, and exceptional set of calves he is leaving. Final Deal 78Z bred well for us and we have a few of his last natural sons on offer. Unfortunately, we lost him last spring so grab one of these sons while you can.



10

10

Red Twin Heritage FD 62H

2185980 MTH 62H 12/02/2020

SIRE

DAM

RED T-K BIG DEAL 98U
RED JLL FINAL DEAL 78Z
JLL PRINCESS 4W

RED BAKERS RIDER PRIDE 100Z
RED BAKERS MARSLITE 319B
RED BAKERS MARSLITE 728U

BW	ACT. WW	ACT. YW
64	567	1118

EPDS	CE	BW	WW	YW	MCE	MK
	14.0	-3.8	20	37	11.0	23

FD 62H is a smooth fronted, moderate framed, heifer bull candidate topped with style and exceptional hip. His dam has averaged a BW of 69 lbs. on four sons to date. What he gives up in power, he more than makes up for in calving ease appeal.



11

11

Red Twin Heritage FD 70H

2185985 MTH 70H 10/03/2020

SIRE

DAM

RED T-K BIG DEAL 98U
RED JLL FINAL DEAL 78Z
JLL PRINCESS 4W

RED TER-RON TRIGGER 80B
RED TWIN HERITAGE NAVANNA 31D
RED TWIN HERITAGE NAVANNA 5A

BW	ACT. WW	ACT. YW
84	632	1186

EPDS	CE	BW	WW	YW	MCE	MK
	3.0	0.3	37	67	0.0	27

Coming in at 113%, FD 70H is the number two indexing bull on weaning. He follows in the pattern of his sire, with a strong foot, nice muscle, and good movement. Maternal strength runs deep in the Navanna cow family as his granddam is our MTH 5A herd matron. This pedigree is a nice mix of old and new with some outcross on both sides.



Red Wilbar Packer 51F



WJD 51F
Dam of Packer

REFERENCE SIRE – RED WILBAR PACKER 51F

We selected Packer from Wilbar's 2018 sale for his strong dam and fresh pedigree for us. We have used Packer on our heifer pen the last couple of years and he is a true calving ease bull. Strong footed, quiet, moderate framed, and highly maternal are the key qualities of 51F. He has left us a consistent set of bulls and we are excited to calve out his daughters next spring.

12 Red Twin Heritage Packer 3H
2185975 MTH 3H 06/01/2020

SIRE
RED MESSMER PACKER S008
RED WILBAR PACKER 51F
RED HEAD CORA 159L

DAM
RED LAZY MC DETOUR 161D
RED TWIN HERITAGE OWYHEE 5F
RED TWIN HERITAGE OWYHEE 21D

BW	ACT. WW	ACT. YW
68	643	1092

EPDS	CE	BW	WW	YW	MCE	MK
	9.0	-1.7	28	47	8.0	23

The Packer sons all exhibit great muscle expression, eye appeal, and dark red hair coat. The cross on our Detour heifers keeps the frame size moderate and lends itself nicely to calving ease consideration. Packer 3H may not push the scales down on sale day, but he will catch your eye.



12

13 Red Twin Heritage Packer 31H
2185977 MTH 31H 26/01/2020

SIRE
RED MESSMER PACKER S008
RED WILBAR PACKER 51F
RED HEAD CORA 159L

DAM
RED LAZY MC KINGMAN 16W
RED TER-RON RACHEL 42Z
RED TER-RON RACHEL 815R

BW	ACT. WW	ACT. YW
74	601	1095

EPDS	CE	BW	WW	YW	MCE	MK
	7.0	-1.6	21	43	4.0	21

These Packer sons are moderate in size, but they do not give up any muscle or eye appeal. Packer 31H is smooth fronted, strong footed, and has a beautiful deep red color. He is backed by a solid uddered, moderate framed dam that traces back to the Rachel cow family at Ter-Ron. She has raised previous high selling bulls and we have retained every daughter from her.



HFx 42Z Udder after calving



13



I doubt we could make this sire group anymore consistent if we tried. All three of these Packer sons are remarkably similar in type and appeal. Packer 34H has a touch more performance than the other two Packer sons, but another good option for heifers.

14 Red Twin Heritage **Packer 34H**
Applied For KTH 34H 30/01/2020

SIRE
RED MESSMER PACKER S008
RED WILBAR PACKER 51F
RED HEAD CORA 159L

DAM
RED TER-RON TRIGGER 80B
RED TWIN HERITAGE JULIET 50E
RED TWIN HERITAGE JULIET 4U

BW	ACT. WW	ACT. YW
73	618	1126

PE	CE	BW	WW	YW	MCE	MK
	0.0	0.8	28	51	-0.5	24

15 Red Twin Heritage **Zama Pine 6H** 
2188314 KTH 6H 10/01/2020

SIRE
RED GEIS ZAMA PINE 190'97
RED GEIS ZAMA PINE 123'03
RED GEIS SAMARIE 234'96

DAM
RED TER-RON TRIGGER 80B
RED TWIN HERITAGE LADY 4E
RED TWIN HERITAGE LADY 67T

BW	ACT. WW	ACT. YW
72	710	1158

EPDS	CE	BW	WW	YW	MCE	MK
	-1.0	0.3	22	35	-3.5	27



Sire:
Red GEIS Zama Pine 123'03

We decided to go back to the well and AI'd a few of our top cows to our Zama Pine 123'03 bull. He was one of the most consistent female makers we have used, leaving us with several daughters still working in the herd. All the Zama daughters have exceptional udders and excellent feet. Customers who have purchased Zama Pine sons in past sales have commented on their longevity and maternal strength. The Zama Pine 6H bull is a good one with eye appeal, style, and natural thickness. This guy could lead off the catalogue but fitting that we close out our offering with a throw back to the past. Twin.

Black Ridge Angus

Well as I write this and reflect on the past year, it was one for the record books. It was the first bull sale that wasn't a family event. That being said it was one of the driest years we have ever had with only 4" of rain last year, but we do have lots of snow!!! The bulls are a very solid, consistent pen, one of the better ones to date. We have been sourcing some great local herd sires along with using our own and the results have been excellent.

The bulls were developed similar to the last few sets of bulls, whole oats mixed, mineral tubs and hay, and this year we have barley silage that we started feeding in January. The bulls were weaned earlier and lighter than the past few years due to poor pasture, but they have been gaining very well on feed. We feel they are in excellent shape to go out and breed. Please feel free to call or stop by at anytime. Please also check out our facebook page for pictures, videos and updates.



Moleski Family

John and Bonnie Moleski 306-331-7787
Steve and Violet Moleski 306-432-4417

"Raising Registered Angus Since 1957"



Check out the bulls on our Black Ridge Angus Facebook page closer to sale day



Dam & Sister:
Black Ridge Gammer 23U

We feel that this bull's dam is one of our stronger cows. The sire, Bonafide, is a foot improver, docile and his dam, HF Echo 206Y really sold us on using this bull. 23H is an outcross pedigree to most, he is very wide based with a very big barrel and nice refined Angus head. His dam has raised several sons, one at Dwayne Flaman's and another at Alan Sizgli's. Her 2019 calf was Chance's 4-H heifer and he may show her this summer as well.

We are reserving the right to draw semen for in herd use, final terms to be announced sale day.



16

16 **Black Ridge Bonifide 23H**
 2189172 DUM 23H 15/02/2020

<u>SIRE</u>	<u>DAM</u>
S A V PEDIGREE 4834 BOSS LAKE BONAFIDE 722E HF ECHO 206Y	BJ'S RICOCHET 7R BLACK RIDGE GAMMER 23U BLACK RIDGE GAMMER 23R

	BW	OCT. 12 WT	JAN. 24 WT			
	82	749	1293			
EPDS	CE	BW	WW	YW	MCE	MK
	2.5	3.7	58	92	7.5	18



17 **Black Ridge Bonifide 6H**
 2189173 MJO 6H 10/02/2020

SIRE DAM
 S A V PEDIGREE 4834 S A V HARVESTOR 0338
BOSS LAKE BONAFIDE 722E **BLACK RIDGE LADY BLOOM 60B**
 HF ECHO 206Y BLACK RIDGE LADY BLOOM 60K

BW	OCT. 12 WT	JAN. 24 WT
60	710	1102

EPDS	CE	BW	WW	YW	MCE	MK
	1.5	4.2	59	97	6.5	19

COW BULL. This bull was the smaller TWIN of two, the other one unfortunately didn't make it. He may have started out really small, but he has grown and turned out to be a very solid bull. Great feet, long bodied, big top and smooth shouldered. His dam is our embryo cow, she has the Harvestor performance and perfect EXT udder in her pedigree. She raised our high selling, top performing bull through this sale last year to Dave and Tamara Marsh.

Black Ridge Riot 26D Sons

These next bulls are all sired by our home raised herd sire. He was one of the best performing bulls we had ever raised, he is exceptionally thick, deep with a smooth shoulder and fine refined Angus head and character and exceptional scrotal. His personal performance was 842 lbs. adj WW and 1480 lbs. actual YW. His calves are some of the top performers in the pen this year and are John's "favorite type of cattle." Easy doing, deep sided, hairy and muscular.



18 **Black Ridge Riot 3H**
 2189582 MJO 3H 05/02/2020

SIRE DAM
 LFE BA LEWIS 3028Z R A F WIDE WORLD 920
BLACK RIDGE RIOT 26D **BLACK RIDGE BLACKCAP 63A**
 BLACK RIDGE BLACKCAP 81Z BLACK RIDGE BLACKCAP 63P

BW	OCT. 11 WT	JAN. 24 WT
98	762	1180

EPDS	CE	BW	WW	YW	MCE	MK
	-3.0	4.4	43	79	-1.0	25

This bull is just a hard-muscled bull, very masculine and thick from nose to tail. His mom is a standout in the herd. Her first two sons sold through this sale to Jeremy Pletz and Dwayne Flaman. All of her daughters have been retained and one of her daughters has her first bull calf in this sale as well. Her bull calves average weaning weight is 752 lbs. He should add performance to your herd.



19 **Black Ridge Riot 99H**
 2186212 DUM 99H 12/02/2020

SIRE DAM
 LFE BA LEWIS 3028Z CONNEALY THUNDER
BLACK RIDGE RIOT 26D **BLACK RIDGE IDA 99Z**
 BLACK RIDGE BLACKCAP 81Z BLACK RIDGE IDA 99T

BW	OCT. 23 WT	JAN. 24 WT
91	828	1307

EPDS	CE	BW	WW	YW	MCE	MK
	2.0	2.6	38	70	7.0	18

Performance bull, gaining over 5 lbs. per day since weaning. Dam is a great cow calving in a 15-day window on her last seven calves and her bull calves will have an adjusted weaning weight of 750 lbs. This guy has lots of hair, full of red meat and tons of grow. Top calf here, we sell our calves by the pound and this guy has that!

20

Black Ridge Riot 62H

2189580 MJO 62H 04/02/2020

SIRE

DAM

LFE BA LEWIS 3028Z S A V MANDAN 0623
BLACK RIDGE RIOT 26D **BLACK RIDGE LEAH 62Z**
 BLACK RIDGE BLACKCAP 81Z BLACK RIDGE LEAH 62W

BW	OCT. 13 WT	JAN. 24 WT
92	832	1327

EPDS	CE	BW	WW	YW	MCE	MK
	-1.0	3.3	44	80	4.5	26

This bull has the honors of our top yearling weight bull in the pen. Dam was a high performing daughter as well. She has a beautiful udder and raises calves that grow! She has calved in a 21-day window on her past four calves. You won't miss this guy sale day, big, excellent bone, tons of hair, big scrotal, deep and lots of red muscle.



20

21

Black Ridge Riot 72H

2184938 MJO 72H 14/02/2020

SIRE

DAM

LFE BA LEWIS 3028Z S A V NET RESULT 7504
BLACK RIDGE RIOT 26D **BLACK RIDGE AUGUSTA 072Y**
 BLACK RIDGE BLACKCAP 81Z BLACK RIDGE AUGUSTA 72R

BW	OCT. 11 WT	JAN. 24 WT
96	870	1268

EPDS	CE	BW	WW	YW	MCE	MK
	2.5	3.2	46	83	3.5	29

Heaviest calf at weaning! Picture perfect mother, and she just gets better with age. At the risk of sounding like a broken record, he is wide topped, long, big boned and has tons of hair. These sons of 26D are all very similar in type.



21

22

Black Ridge Riot 1H

2186220 DUM 1H 13/02/2020

SIRE

DAM

LFE BA LEWIS 3028Z PEAK DOT IRON MOUNTAIN 781Y
BLACK RIDGE RIOT 26D **BLACK RIDGE RUBY 87B**
 BLACK RIDGE BLACKCAP 81Z BLACK RIDGE RUBY 87S

BW	OCT. 23 WT	JAN. 24 WT
87	777	1077

EPDS	CE	BW	WW	YW	MCE	MK
	0.0	3.0	46	82	5.5	18

Solid bull, very hairy, correct and well balanced with a nice birth weight. Young dam is now on her fifth calf and is a real solid female. She also raised Chance's 4-H heifer a couple years ago. Her bull calf last year was sold off the farm.



22



23

This bull is very complete in his makeup, just a real solid bull from nose to tail. Clean sheathed, strong top. His dam is a solid, moderate cow with nine calves raised and has a gorgeous udder at 11 years old. The old 14U bull is shining through his daughters we raised.

23

Black Ridge Rito 60H

2186211 DUM 60H 11/02/2020

SIRE

LFE BA LEWIS 3028Z
BLACK RIDGE RIOT 26D
 BLACK RIDGE BLACKCAP 81Z

DAM

BLACK RIDGE POWERSTROKE 14U
BLACK RIDGE LADY BLOOM 60Y
 BLACK RIDGE LADY BLOOM 60U

BW	OCT. 11 WT	JAN. 24 WT
95	751	1057

EPDS	CE	BW	WW	YW	MCE	MK
	0.0	3.8	42	78	5.0	18



24

24

Black Ridge Riot 22H

2189583 DUM 22H 05/02/2020

SIRE

LFE BA LEWIS 3028Z
BLACK RIDGE RIOT 26D
 BLACK RIDGE BLACKCAP 81Z

DAM

PEAK DOT POWER UP 37S
BLACK RIDGE LEONA 22B
 BLACK RIDGE LEONA 22W

BW	OCT. 2 WT	JAN. 24 WT
95	739	1120

EPDS	CE	BW	WW	YW	MCE	MK
	-1.0	4.1	42	73	5.5	21

This guy unfortunately lost some of his ears when he was born outside, but now he matches his mom and her short ears. Dam is an up and coming young cow, last year Lane used her heifer calf for 4-H, except we never had the opportunity to show due to COVID.



25

25

Black Ridge Riot 74H

2189581 MJO 74H 06/02/2020

SIRE

LFE BA LEWIS 3028Z
BLACK RIDGE RIOT 26D
 BLACK RIDGE BLACKCAP 81Z

DAM

LFE BA LEWIS 3028Z
BLACK RIDGE MARINA 74C
 BLACK RIDGE INDIANNA 74T

BW	OCT. 23 WT	JAN. 24 WT
95	805	1307

EPDS	CE	BW	WW	YW	MCE	MK
	-1.5	4.4	42	74	2.5	22

This guy is flashy, deep sided, lots of hair and bone, his calves should have lots of grow. Unfortunately, he lost some of his ears as well but that didn't stop him from growing! Granddam was a top cow whom we flushed. His dam is a young cow that is a solid producer, she has calved in a seven-day window on her first four calves. Her daughter has a bull in this sale as well. A bull from a great cow family!

BJ's Right Time 831 Sons

A couple years ago we had the opportunity to purchase an embryo calf out of the immortal Right Time and a Merit dam. It was an excellent combination of genetics and we jumped at it. We bought him to produce those females that are the backbone of a herd. We are looking forward to superior footed, fertile and beautifully uddered females. The bull calves we got are a bonus! They are very true to Angus character, have excellent bone and foot structure, moderate in frame and well-muscled.

Good looking, masculine bull, moderate in frame but is long and wide with good foot and leg structure. His dam is very young, and this is her third calf, she is a solid moderate meat machine. Last year she had a top selling bull to Sheldon Popadyne through this sale. She has calves in a 14-day window on her first three calves. Keep all the heifers from this bull.



26

26 **Black Ridge Right Time 3H**
 2186222 DUM 3H 16/02/2020

SIRE
 LEACHMAN RIGHT TIME
BJ'S RIGHT TIME 831
 MERIT JILT 7091

DAM
 SITZ UPWARD 307R
BLACK RIDGE PRIDISTA 51D
 BLACK RIDGE PRIDISTA 015Y

	BW	OCT. 12 WT	JAN. 24 WT
	89	737	1125

EPDS	CE	BW	WW	YW	MCE	MK
	3.5	1.7	37	71	9.0	27

27 **Black Ridge Right Time 6H**
 Applied For DUM 6H 25/02/2020

SIRE
 LEACHMAN RIGHT TIME
BJ'S RIGHT TIME 831
 MERIT JILT 7091

DAM
 RING CREEK BIG SPLIT 11Y
BLACK RIDGE BLACKCAP 6C
 BLACK RIDGE BLACKCAP 16Y

	BW	OCT. 23 WT	JAN. 24 WT
	90	739	1030

PE	CE	BW	WW	YW	MCE	MK
	2.5	1.4	36	67	8.0	26

A Right Time son who has a wide top, stand square and of moderate frame. He has great hair and a great foot. His pedigree is stacked full of great cows and sires! His dam is an excellent young cow, who has calved in an 18-day window on her last three calves.



BJ'S Right Time 831

Our Bulls Are Developed On Whole Oats



28

Black Ridge Right Time 13H

Applied For DUM 13H 26/03/2020

SIRE

DAM

LEACHMAN RIGHT TIME
BJ'S RIGHT TIME 831
MERIT JILT 7091

LFE BA LEWIS 3028Z
BLACK RIDGE BLACKCAP 17D
BLACK RIDGE BLACKCAP 71Z

BW	OCT. 23 WT	JAN. 24 WT
82	700	985

PE	CE	BW	WW	YW	MCE	MK
	-1.0	2.4	40	71	7.0	28

The older John and I get the later we like calving, as it is much less work. This bull will be 366 days old on sale day, but he is such a great looking bull he deserves to be in this sale. His mother is young and getting better with age, she just calved again on February 14, 2021, catching up her calving interval by 38 days! This bull just catches your eye; hairy, stout just a very complete package.

28

Black Ridge Believe 142E "Canadian" Sons

A bull I wished we would have used more! As a yearling he went out in our heifer pen, but then a neighbor needed a heifer bull, so off he went. The next year we used him for the heifer pen for a couple weeks and then went to summer pasture cleanup, and these bulls are the result. Beautiful foot, extremely docile, thick, easy doing, deep and wide... see our Facebook page for more pictures and videos of the sire.



29

Black Ridge Believe 93H

Applied For MJO 93H 28/02/2020

SIRE

DAM

YOUNG DALE BELIEVE 46B
BLACK RIDGE BELIEVE 142E
BLACK RIDGE GEORGINA 142C

BLACK RIDGE BULLS EYE 3B
BLACK RIDGE BLACKCAP 93F
BLACK RIDGE BLACKCAP 63A

BW	OCT. 23 WT	JAN. 24 WT
84	751	1100

PE	CE	BW	WW	YW	MCE	MK
	0.0	3.9	55	96	3.5	20

Out of a first calf heifer, and this guy is as solid as they come. He is wide topped, long and extremely well balanced. His dam is a maternal brother to the Lot 18 (MJO 3H) bull, so we have high hopes of her becoming a top cow in our herd, and she did an excellent job on her first calf. This bull will have a little more performance from the pedigree so he would be an excellent candidate on your cows.

Black Ridge Believe 142E

30

Black Ridge Believe 77H

2186454 MJO 77H 22/02/2020

SIRE

DAM

YOUNG DALE BELIEVE 46B
BLACK RIDGE BELIEVE 142E
BLACK RIDGE GEORGINA 142C

BOYD NEW DAY 8005
BLACK RIDGE MARINA 77F
BLACK RIDGE MARINA 74C

BW	OCT. 11 WT	JAN. 24 WT
75	716	1010

EPDS	CE	BW	WW	YW	MCE	MK
	5.5	1.1	51	89	6.0	21

This guy is my favorite heifer bull of the pen this year, and he is also the most docile. His mom also has a brother selling in this sale, Lot 25 (MJO 74H). This guy has very good cows in his pedigree. He is long, moderate in frame, beautiful Angus head and stands on a great foot. His maternal side all have perfect udders. I have high hopes for this guy!

30

31

Black Ridge Hollywood 26H

Applied For MJO 26H 17/03/2020

SIRE

DAM

YOUNG DALE BELIEVE 46B RING CREEK BIG SPLIT 11Y
BLACK RIDGE BELIEVE 142E **BLACK RIDGE BLACKCAP 25C**
 BLACK RIDGE GEORGINA 142C BLACK RIDGE BLACKCAP 25W

BW	OCT. WT	JAN. 24 WT
85	764	1102

PE	CE	BW	WW	YW	MCE	MK
	5.0	2.0	56	100	7.5	21

Another extremely well-balanced bull, wide topped, long and smooth made. His dam comes from the Blackcap 25R family who has many progeny here and bulls working in several commercial and purebred herds. We retained a brother to this guy last year to use for ourselves. Good foot, udders, longevity and performance in this family.



31

32

Black Ridge Torque 5H

2186221 DUM 5H 14/02/2020

SIRE

DAM

SA V 004 DENSITY 4336 PEAK DOT IRON MOUNTAIN 781Y
BRUIN TORQUE 5261 **BLACK RIDGE ERROLLINE 44B**
 FALCON BLACKBIRD 6071 BLACK RIDGE ERROLLINE 44X

BW	OCT. 11 WT	JAN. 24 WT
80	748	1093

EPDS	CE	BW	WW	YW	MCE	MK
	2.0	1.9	49	95	6.0	21

This guy is sired by the highly popular AI sire, Torque. His dam and maternal family are known for their lighter birth weights. More moderate in frame, but a beef machine! He is longer, lower to the ground and round in shape. Dam weaned him off at an excellent weight on poor pasture conditions.



32

33

Black Ridge Boulder 40H

Applied For DUM 40H 14/02/2020

SIRE

DAM

HOOVER DAM BLACK RIDGE BULLS EYE 3B
MUSGRAVE BOULDER **BLACK RIDGE BLACKCAP 40F**
 MILL BRAE SA JAUNTY 3079 BLACK RIDGE BLACKCAP 16Y

BW	OCT. 12 WT	JAN. 24 WT
75	685	976

EPDS	CE	BW	WW	YW	MCE	MK

A light birth weight son from a popular AI heifer sire, Boulder. The dam is a first calf heifer out of one John's favorite older cows on the farm. She did a good job raising her first calf. He stands square, excellent hair coat, wide across the top and will be moderate in frame.



**Our Bulls Are Developed
On Whole Oats**

Harcourt Charolais



We would like to like to welcome everyone to the 17th Annual Best of the Breeds Bull Sale. Every year we strive to bring you the most current genetics available. These bulls are selected based on the criteria that you, the producer, have asked for. Performance bulls that have calving ease built into their pedigree that are structurally sound, fertile, along with great dispositions. We are proud to say that these bulls exemplify all of these traits! They are big bodied, athletic bulls that can really travel.

This year our main herd sire was SVY Wizard 707E. He was the high selling bull calf at \$55,000 at the 2017 Agribition Sale among one of the most impressive string of flush mates ever seen in the Charolais barn. His mother, SVY Starstruck 409B was named Miss World Charolais and is one of the most phenotypically correct females you will ever find. We have found the Wizard progeny were born easy and were very attractive from day one.

The WCR Commissioner son in the sale is in a word... FANTASTIC. Bulls like him don't come along every day. The SOS Hoey son is breeder quality and is definitely worth a look. The two HBC Cortez sons in the sale are out of top end cows. Cortez himself comes from one of our best and oldest cow families.

We invite you to stop by the farm anytime and have a look at the bulls. Or give us a call and we can help you find a bull that will work in your program.

Chris Poley has been through the pen and evaluated the bulls. The team at T Bar C will be happy to assist you in any way they can prior to the sale. Jon Wright and Helge By of the Charolais Banner have also been through the pen, and Helge will be on hand sale day.

Check out videos of the bulls and the sale catalogue on our website at harcourtcharolais.com or visit our Facebook page, Harcourt Charolais. They are also available on buyagro.com and DLMS.ca.

We look forward to seeing you at this year's sale!

Doug, Tammy, Jennifer & Justin Harcourt
Doug's Cell: 306-383-7068 Justin's Cell: 306-383-7168

Videos available at: harcourtcharolais.com and www.buyagro.com
Check out our Facebook page: [Harcourt Charolais](https://www.facebook.com/HarcourtCharolais)



REWARD OFFERED
\$ 2000.

CHAROLAIS BULL BUYER SALE CREDIT

You can have your name entered in the draw to receive the REWARD simply by purchasing a CHAROLAIS bull from any Saskatchewan Charolais Member. For every bull you purchase & their registration papers transferred by August 31 you receive a chance to win the reward!

Open to all 2021 SCA bull customers. You can purchase your herd sire either through a sale or privately.

**** THE BULL MUST HAVE HIS REGISTRATION PAPERS TRANSFERRED. ****

Sponsored by the Saskatchewan Charolais Association.

Charolais Breed Averages

EPDS	CE	BW	WW	YW	MK	MTL
	5.4	0.8	44.5	85.7	21.3	43.5



Sire of Lot 34:
WCR Commissioner 593 P



Dam of Lot 34:
HBC Temptation 802F

34

34

HBC Summit 1H

Homo Polled PMC794114 HBC 1H 02/01/2020

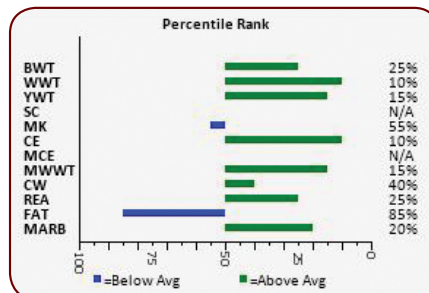
SIRE

DAM

WCR COUNTY LINE 3132 P WC MILESTONE 5223 P
WCR COMMISSIONER 593 P HBC TEMPTATION 802F
 WCR MS BRAVO 399 P HBC BRIGHT LIGHTS 509C

BW	OCT. 1 WT	FEB. 1 WT
82	1142	1532

EPDS	CE	BW	WW	YW	MK	MTL
	10.9	-0.9	56	101	21	49



HOMOZYGOUS POLLED. When Chris Poley first saw Summit, he said "this calf hits you pretty hard." 1H is as long as a train and just as powerful. When you start checking boxes on a herd bull, he has to look the part, have all the numbers needed and a powerful dam. 1H checks them all! 802F is as long and deep a cow as you will find. She has a great udder, a big foot and character skull. When breeders saw her on the show road the comment many times was that she is the kind of female that will produce herd bulls. She knocked it out of the park in her first try! Summit is an incredible combo of low birth weight and extreme growth. Check out his EPDS: top 25% of the breed for Birth Weight, top 10% for Weaning Weight and top 15% for Yearling Weight. He is homo polled and has a big set of perfect nuts. He measured 37cm at 12 months of age. Let Summit lead your program to the top.

SELLING 3/4 INTEREST, FULL POSSESSION



**Maternal Granddam of Lot 35:
HBC First Date 412B**

HOMOZYGOUS POLLED. White Claw is everything we like to see in a herd sire! He was a standout since birth. He's big bodied, soft made, big footed, big scrotal and has the herd bull presence! Not to mention his stellar disposition! Like all of the Wizard calves, he is powerfully built and high libido. His dam, HBC Royal 719E is a tremendous female who is super thick made, deep bodied, and paired with a tidy square udder underneath. She is in the top 1% of the breed for WW and YW EPDs! Like his mother, White Claw is very sound, athletic and loaded with volume! White Claw is homozygous polled by pedigree, has a moderate birth weight, and is super attractive in his design! This bull is a bull you don't want to miss!

SELLING 3/4 INTEREST, FULL POSSESSION



35 HBC White Claw 10H
Homo Polled PMC789450 HBC 10H 04/02/2020

SIRE		DAM	
HRJ CROWD FAVOURITE 515C	HBC G2 430B	HBC ROYAL 719E	HBC FIRST DATE 412B
SVY WIZARD 707E			
SVY STARSTRUCK 409B			

BW	OCT. 1 WT	FEB. 1 WT
92	1005	1410

EPDS	CE	BW	WW	YW	MK	MTL
	4.1	1.2	53	99	22	49

36 HBC Paradox 8H
Double Polled PMC799962 HBC 8H 15/01/2020

SIRE		DAM	
HRJ CROWD FAVOURITE 515C	PARROWS BRAXTON 519C	STEPPLER MISS 331E	STEPPLER MISS 132Z
SVY WIZARD 707E			
SVY STARSTRUCK 409B			

BW	OCT. 1 WT	FEB. 1 WT
95	918	1340

EPDS	CE	BW	WW	YW	MK	MTL
	7.3	0.5	32	67	25	41



**Dam of Lot 36:
Steppler Miss 331E**

8H is a pen favourite. Talk about royalty in the blood. SVY Wizard 707E, SVY Starstruck 409B on the top side and the \$100,000 Sparrow's Braxton on the dam side. The shape and athletic ability along with a thick, curly hair coat make this bull one to watch. DSY 331E has a perfect, uptight udder and has great feet and overall structure. Backed by some of the best herds in the industry. The predictability in this bull is insane. Check him out.

SELLING 3/4 INTEREST, FULL POSSESSION





37



**Sire of Lots 35-39:
SVY Wizard 707E (as a yearling)**

This Wizard son catches your eye every time. Moderate birth weight, solid feet and legs and out of a moderate Copenhagen cow that always raises a big calf. These Wizard sons continue to impress us with their great dispositions and fault free structure. 14H has that attractive look that he will pass on to his offspring that will sure to top any market anywhere.

37 HBC Bedrock 14H
Double Polled PMC799963 HBC 14H 04/02/2020

SIRE HRJ CROWD FAVOURITE 515C
SVY WIZARD 707E
SVY STARSTRUCK 409B

DAM SPARROWS COPENHAGEN 210Z
STEPPLER MISS 107B
STEPPLER HIGHLITER 19R

BW	OCT. 1 WT	FEB. 1 WT
90	848	1290

EPDS	CE	BW	WW	YW	MK	MTL
	5.0	-0.5	27	64	26	39

38 HBC Southpaw 2H
Homo Polled PMC799961 HBC 2H 02/01/2020

SIRE HRJ CROWD FAVOURITE 515C
SVY WIZARD 707E
SVY STARSTRUCK 409B

DAM PCC SUDDEN IMPACT 848U
HBC MELISSA 212Z
HBC MELISSA 507R

BW	OCT. 1 WT	FEB. 1 WT
80 (twin)	963	1353

EPDS	CE	BW	WW	YW	MK	MTL
	7.6	0.2	30	57	18	34



38



**Dam of Lot 38:
HBC Melissa 212Z**

HOMOZYGOUS POLLED. 2H is typical of the Wizard sons we have on offer. He is great footed, big nutted and quiet. Our Wizards calved unassisted and never looked back. They grow, are easy to feed and easy to be around. 212Z is a very consistent cow that have put many bulls through this sale and this year had the second-high selling bred heifer in the Sterling Collection Sale to Johnson Charolais in Alberta.



**Dam of Lot 39:
LAE Brandy 4141B**

This big, long tank of a bull will put pounds on your calves. Recommended for bigger cows. 15H was born unassisted from a moderate no-miss cow, 4141B. If that cow seems familiar, she is! She has produced herd bull after herd bull. The mother of HBC Ransom, the tremendous HBC G2 son that walks at Balamore Farms, Nova Scotia. Her sons are always at the top of the pen for growth. Add 15H to your bull battery and have fun selling those big, market topping steers!



39

39 HBC Windfall 15H
 Double Polled PMC799964 HBC 15H 05/02/2020

SIRE		DAM	
HRJ CROWD FAVOURITE 515C	SVY WIZARD 707E	WINN MANS VISTAZO 740X	LAE BRANDY 4141B
SVY STARSTRUCK 409B		LAE TAMMY 2141Z	

BW	OCT. 1 WT	FEB. 1 WT
107	1000	1430

EPDS	CE	BW	WW	YW	MK	MTL
	-0.4	3.5	43	79	21	43

40 HBC Rewind 20H
 Double Polled PMC799965 HBC 20H 10/02/2020

SIRE		DAM	
WINN MANS CHAVEZ 826Y	SOS HOOEY PLD 127D	LAE X-CEPTIONAL 46X	WOOD RIVER GLAMOUROUS 9A
FFBB ABBI 307A		WOOD RIVER GLAMOUROUS 138T	

BW	OCT. 1 WT	FEB. 1 WT
94	980	1390

EPDS	CE	BW	WW	YW	MK	MTL
	6.8	0.6	41	87	11	32



**Sire of Lot 40:
SOS Hooley PLD 127D**



**Dam of Lot 40:
Wood River Glamourous 9A**

Take note here! A smooth polled SOS Hooley son that pounds down the scale. He is an impressive, deep sided son of a gun, fault free and quiet. This guy moves and looks like a herd bull. His dam was a high seller we purchased in the Wood River Female Sale a few years back and she has lived up to her billing. She is moderate, deep and very quiet. Her udder is made the way it should be – up tight, loads of milk and perfect teat size. 20H is the image of his sire, SOS Hooley 127D. Great genetics in a picture-perfect package. Study him closely. He won't disappoint.

SELLING 3/4 INTEREST, FULL POSSESSION



40



**Sire of Lots 41 & 42:
HBC Cortez 805F**



**Dam of Lot 41:
HBC Paris 816F**

HBC Cortez, the sire of 21H, was the highest performing and most complete son of JWX DOWNTOWN that we raised and out of one of our top cow families as well. We used him as clean up to our AI program and by the looks of his calves, we should have used him more. 21H

is quite a package. Low birth weight, easy calving and big barrelled, he grabs you when he comes in the pen. Jon Wright picked him as his favourite in the pen. His mother is a perfect female. Moderate in size and is structurally perfect. Her udder can't be any better. Square and uptight with a lot of milk and perfect teat size. A cow Justin says he should show as a pair. She is that good! Same cow family as 20H. Proof is in the genetics.

41 **HBC Crossfire 21H**
Double Polled PMC799967 HBC 21H 19/02/2020

<u>SIRE</u>		<u>DAM</u>	
JWX DOWNTOWN 7C	HBC G2 430B	HBC CORTEZ 805F	HBC PARIS 816F
KCM IKEA 515R	WOOD RIVER GLAMOUROUS 9A		

BW	OCT. 1 WT	FEB. 1 WT
90	941	1331

EPDS	CE	BW	WW	YW	MK	MTL
	5.7	2.4	58	109	19	47

42 **HBC Rolltide 28H**
Double Polled PMC804502 HBC 28H 30/03/2020

<u>SIRE</u>		<u>DAM</u>	
JWX DOWNTOWN 7C	TR MR FIRE WATER 5792RET	HBC CORTEZ 805F	HBC BRIGHT LIGHTS 509C
KCM IKEA 515R	JMB PRIDE 846U		

BW	OCT. 1 WT	FEB. 1 WT
105	780	1285

EPDS	CE	BW	WW	YW	MK	MTL
	1.3	4.3	49	97	23	47



**Dam of Lot 42:
HBC Bright Lights 509C**

A Cortez son with all the power of his sire along with a great, young Fire Water cow that produced HBC Temptation 802F, the dam of HBC Summit 1H. Again, power in the genetics. 28H will add pounds baby! Don't walk away from this one with loads of potential.

Dogpatch Acres

Welcome to the 17th edition of the Best of the Breeds Bull Sale. Thank you to our repeat buyers, bidders and the new customers that support our program. We focus our breeding on the main areas that cattlemen look at when purchasing a new bull; calving ease, growth and performance, hair, soundness and docility. We provide stout, moderate framed bulls that can get out and service your cows. As an added bonus, nearly all our bulls have tested positive for homozygous polled.



This year the majority of our bulls are sired by our two senior herd sires. MXS Richmond, who passes on a lot of the attributes of his sire, JWX Downtown, like great hair, polled performance and docility. HBC Hercules stamps his calves in the true TR MR Turton style, with moderate frames, nubs, butts, and guts. We had a big run of heifer calves through the middle of our calving season, so this group of bulls is a lot younger on average than other years. They still exhibit the structural soundness, thickness and hair coats that make today's Charolais cross calves in demand.

Last, but not least, we have some AI calves from a few sires that have proven their acceptance in the industry. WC Big Ben, DR Monsoon and our own Dogpatch Futura for their calving ease, Dogpatch Gillette and JWX Downtown, and KASS Famous for their performance while maintaining calving ease and can really add some muscle.

To deal with last year's extreme cold we really had to pour the feed to the cows which contributed to slightly higher birth weights. We had no problems with calving and are confident you won't either. This year we have worked with Master Feeds nutritionists to develop a new ration that provides good growth and will add even more longevity to your bulls. The bulls will have had both shots of Fusogard for prevention of foot rot by sale time so they will be ready to turn out when you need them.

We are pleased with this year's offering as it reflects our breeding program. We stand behind our bulls and for our customers, we keep a few bulls in reserve for your insurance in case you have a wreck. With COVID restrictions in place, we encourage you to call or drop by the farm if you have questions or to view the bulls and their mothers or check out our videos on our website at www.dogpatchacres.com in early March. With any luck, we hope to see you in Yorkton!

Check out our videos at www.dogpatchacres.com

Michael, Annette, Evan and Carley Zentner

Charolais Breed Averages

EPDS	CE	BW	WW	YW	MK	MTL
	5.4	0.8	44.5	85.7	21.3	43.5



A GREAT PERFORMER. A smooth made individual with tremendous thickness and tons of red meat. A big square hip and a wide flat top, shows off his fleshing ability. This long-bodied prospect comes from a high-performance cow. Houston's calves will hit the ground growing and will really tip the scales come fall. A low birth weight EPD indicates calving ease still exists in this performance pedigree.

43 Dogpatch **Houston** 93H
 Homo Polled PMC807174 MGZ 93H 20/01/2020

SIRE	DAM
MVY ALL STAR 61A DOGPATCH GILLETTE 7E HC WHIRLWIND 927W	CSS SIR GRIDMAKER 2W DOGPATCH FANCY 93B DOGPATCH FANCY 29U

	CE	BW	NOV. 25 WT	FEB. 15 WT	AOD
U		99	1155	1525	6

EPDS	CE	BW	WW	YW	MK	MTL
	3.5	0.9	42	83	18	39



A younger, moderate framed bull socked full of red meat and muscle, and a top you could shoot pool on. Coming from a solid, mature cow and the award winning Turton pedigree, you can bet longevity is built in here. Depth, volume and natural thickness, combined with a stylish hair coat add to this guy's appeal. Spitting image of his sire, with a great foot under him, Hercules 28H will be asset to any herd.

44

44

Dogpatch Hercules 28H

Homo Polled PMC807177 MGZ 28H 29/02/2020

SIRE

TR PZC MR TURTON 0794 ET
HBC HERCULES 607D
HBC VENUS 416B

DAM

MVY ALL STAR 61A
DOGPATCH MELISSA 38D
HBC MELISSA 906W

CE	BW	NOV. 25 WT	FEB. 15 WT	AOD
U	94	922	1250	4

EPDS	CE	BW	WW	YW	MK	MTL
	9.1	0.2	39	78	20	39

45

Dogpatch Hannibal 27H

Homo Polled PMC807207 MGZ 27H 24/02/2020

SIRE

WC BIG BEN 9036
DOGPATCH FUTURA 73F
DOGPATCH KATELIN 73Z

DAM

JWX DOWNTOWN 7C
DOGPATCH KATNESS74F
DOGPATCH KATNESS 74Z

CE	BW	NOV. 25 WT	FEB. 15 WT	AOD
U	86	824	1135	2

EPDS	CE	BW	WW	YW	MK	MTL
	10.0	-1.6	43	85	19	41



Certified Heifer Safe. A stylish bull calf out of a first calf heifer, Hannibal comes with an exceptional 86 lb. birth weight, but this guy can really turn it on! A weaning weight of over 700 lbs., this eye catcher is surely a confidence builder for those with a pen of heifers to breed. Get the Char-cross advantage out of your heifer pen without concerns around calving. His high calving ease and well below normal birth weight EPD will make calving heifers a stress-free time. Small head, smooth front and tons of curly hair.

45

Heifer Bull. A classy looking bull with an extremely high calving ease number, and a negative birth weight EPD, makes Hugo a great choice for your heifers. A nice head, laid in shoulders and smooth throughout his body, will allow his calves to slip out easily and trouble free. Hugo can put on the pounds too. Weaning off at nearly 800 lbs., Hugo got some length and good depth of body, a clean sheath and a wide top makes him an eye-catching rascal too!



46

46

Dogpatch Hugo 24H

Homo Polled PMC807227 MGZ 24H 23/01/2020

SIRE

WC BIG BEN 9036
DOGPATCH FUTURA 73F
 DOGPATCH KATELIN 73Z

DAM

JWX DOWNTOWN 7C
DOGPATCH REDWOOD 35F
 DOGPATCH REDWOOD 4W

CE	BW	NOV. 25 WT	FEB. 15 WT	AOD
U	84	928	1240	2

EPDS	CE	BW	WW	YW	MK	MTL
	12.0	-2.0	42	82	21	42

47

Dogpatch Hunter 2H

Homo Polled PMC807188 MGZ 2H 19/02/2020

SIRE

TR PZC MR TURTON 0794 ET
HBC HERCULES 607D
 HBC VENUS 416B

DAM

CJC SYMBOL B1067P
DOGPATCH FANCY 2E
 DOGPATCH FANCY 29U

CE	BW	NOV. 25 WT	FEB. 15 WT	AOD
U	96	890	1165	3

EPDS	CE	BW	WW	YW	MK	MTL
	5.3	2.4	46	85	23	46

Hunter comes with a nice thick top and square hip. He has genuine thickness throughout and is carried on a perfect set of legs and feet. The pedigree backing up this bull is full of moderate framed, deep sided bulls that can really pack on the pounds. Polled heads, calving ease and good hair coats are predominant features in his DNA.



47



48

Holmes is a deep sided, great haired, young sire with a big square hip. He will make an excellent cross on any female helping to produce those calves with extra volume, hair coats and lean red meat that pays the bills. Crossing on blacks or reds will result in the hairy polled calves that will make the buyers come alive.

48

Dogpatch Holmes 23H

Homo Polled PMC807222 MGZ 23H 15/02/2020

SIRE

TR PZC MR TURTON 0794 ET
HBC HERCULES 607D
HBC VENUS 416B

DAM

MVY ALL STAR 61A
DOGPATCH PUSSYCAT 25D
QCR PUSSYCAT 25P

CE	BW	NOV. 25 WT	FEB. 15 WT	AOD
U	96	972	1235	4

EPDS	CE	BW	WW	YW	MK	MTL
	7.8	0.9	42	81	19	39

49

Dogpatch Hoffa 97H

Homo Polled PMC807180 MGZ 97H 14/02/2020

SIRE

TR PZC MR TURTON 0794 ET
HBC HERCULES 607D
HBC VENUS 416B

DAM

PCC SUDDEN IMPACT 848U
DOGPATCH TINK 97B
DOGPATCH TINK 22W

CE	BW	NOV. 25 WT	FEB. 15 WT	AOD
U	103	1000	1325	6

EPDS	CE	BW	WW	YW	MK	MTL
	5.1	1.8	41	80	22	43



49

A nice bull with a great weaning weight and carries the stamp of his father. Strong topped and deep sided with lots of volume are some of Hoffa's characteristics. A nice polled head on his smooth shoulders and a great foundation combined with his gentle nature make Hoffa one to take home on sale day!

Herd sire alert. If you are looking for a performance herd sire that checks all the boxes, here he is. A slightly higher birth weight is linked to his long body and natural thickness. A strong, flat topped bull with a square hip that carries deep into his quarter. Big scrotal, clean sheath, good hair coat, and travelling on a solid flowing chassis. This gentle giant is definitely a sale feature.



50

50

Dogpatch Horatio 15H

Homo Polled PMC807197 MGZ 15H 01/02/2020

SIRE

JWX DOWNTOWN 7C
MXS RICHMOND 722E
MXS MAUDE 284Z

DAM

MVY ALL STAR 61A
DOGPATCH FERRARI 15C
DOGPATCH FERRARI 45S

CE	BW	NOV. 25 WT	FEB. 15 WT	AOD
U	106	1180	1535	5

EPDS	CE	BW	WW	YW	MK	MTL
	4.2	1.6	51	100	15	40

51

Dogpatch Hudson 63H

Homo Polled PMC807201 MGZ 63H 28/01/2020

SIRE

JWX DOWNTOWN 7C
MXS RICHMOND 722E
MXS MAUDE 284Z

DAM

HBC BROKER 318N
DOGPATCH DIVA 17Y
QCR PRECIOUS 17P

CE	BW	NOV. 25 WT	FEB. 15 WT	AOD
U	102	978	1345	9

EPDS	CE	BW	WW	YW	MK	MTL
	2.2	2.5	54	102	17	44

The JWX Downtown influence from his grandsire is evident in this rascal. A big, deep barrel, big boned and lots of scrotal, not to mention his performance ability are a few of his awesome traits that makes Hudson stand out in the pen. Off one of our top cows, and the high selling SOS Richmond bull, you are getting a power infused pedigree. Hudson's pedigree backs up his ability to produce the calves that bring home the pay weight come fall.



51



52

Hitman is a well put together individual. He has a little extra height to reach the mature cows and the natural thickness to go with it. Nice headed and sharp fronted means calves will pop out easily and perform well. His dam has proven her worth with every bull she has raised making the sale, and still going at 12 years of age! Hitman will add some stretch in the calves and be a great cross on those British based herds.

52

Dogpatch Hitman 22H

Homo Polled PMC807204 MGZ 22H 14/01/2020

SIRE

MVY ALL STAR 61A
DOGPATCH GILLETTE 7E
HC WHIRLWIND 927W

DAM

DOGPATCH TRIPLE X 36S
DOGPATCH TINK 22W
ELDER'S WINDSTAR 184J

CE	BW	NOV. 25 WT	FEB. 15 WT	AOD
U	101	1095	1405	11

EPDS	CE	BW	WW	YW	MK	MTL
	2.1	0.8	41	84	18	38

53

Dogpatch Hipster 80H

Scurred SMC807211 MGZ 80H 16/01/2020

SIRE

D R REVELATION 467
D R MONSOON 45
DR ALEXIS 412 ET

DAM

PLESANT DAWN RIO136X
DOGPATCH FERRARI 80A
DOGPATCH FERRARI 45S

CE	BW	NOV. 25 WT	FEB. 15 WT	AOD
U	81	1035	1325	7

EPDS	CE	BW	WW	YW	MK	MTL
	8.2	-1.5	35	68	26	43



53

Hard to believe a bull with this much horsepower came with an 81 lb. birth weight. Hipster is a surprising individual with his outstanding weaning weight and average daily gain. His sire is new to the breed and delivers calves with shorter gestation, beautiful profiling calves with moderate birth weights. A moderate frame, deep sided calf with the heavy fur coat needed to excel in the cold winter months. His light birth weight and a below average birth weight EPD, you know you can turn him out and be worry free, even in your heifer pen!

Hyperlink is a buff colored bull with a flowing hair coat. A smooth fronted bull with a long spine and a touch more frame allows him to service the mature cows in your herd. These assets combined with a polled pedigree and a sound structure make Hyperlink one to check out sale day. This Downtown son will cover some ground for you as well. Calm mannered and easy to handle, you will be confident turning him out with your cows, and excited when bringing in his calves to market.



54

54

Dogpatch Hyperlink 3H

Homo Polled PMC807215 MGZ 3H 10/01/2020

SIRE

JWX FIFTY SHADES 706Z
JWX DOWNTOWN 7C
 JWXC MERCEDES 20Z

DAM

CSS SIR GRIDMAKER 2W
DOGPATCH WHEELER 64D
 DOGPATCH WHEELS 23Y

CE	BW	NOV. 25 WT	FEB. 15 WT	AOD
U	100	1060	1335	4

EPDS	CE	BW	WW	YW	MK	MTL
	6.0	2.3	48	94	18	42

55

Dogpatch Hilton 16H

Homo Polled PMC807185 MGZ 16H 10/01/2020

SIRE

LT BLUEGRASS 4017 P
WC BIG BEN 9036
 VCRMISDUCHESS9506POLLED

DAM

MVY ALL STAR 61A
DOGPATCH CHRISTIE 9F
 DOGPATCH CHRISTIE 9C

CE	BW	NOV. 25 WT	FEB. 15 WT	AOD
U	86	1080	1315	2

EPDS	CE	BW	WW	YW	MK	MTL
	11.2	-2.5	40	73	15	35

Outcross Heifer Bull. Wondering what's new that you can put into your heifer pen? Here is your chance to get in on the ground floor with this exciting proven heifer safe bloodline. WC Big Ben was used so successfully by operations like Wright-Curtis Charolais, and Weink Charolais in the states. Hilton's pedigree is stacked with calving ease and good growth numbers. Smooth up front with a small polled head to lead the way, Hilton will pass on the great calving in any herd regardless of the color, and he is no slouch when it comes to weigh in. All out of a first calf heifer to boot!



55



A well put together individual with a moderate frame and socked full of red meat. Hesston has a top you could shoot pool on, and continues that bulk and thickness throughout his hip and quarter. Take note of the thick, curly hair coat to brave these prairie winters. A great birth weight, tremendous weaning weight and a front pasture mother, makes Hesston a great choice sale day.

56

56

Dogpatch Hesston 43H

Homo Polled PMC807224 MGZ 43H 09/01/2020

SIRE

JWX FIFTY SHADES 706Z
JWX DOWNTOWN 7C
JWX MERCEDES 20Z

DAM

CSS SIR GRIDMAKER 2W
DOGPATCH KATELIN 73D
DOGPATCH KATELIN 73Z

CE	BW	NOV. 25 WT	FEB. 15 WT	AOD
U	100	1155	1445	4

EPDS	CE	BW	WW	YW	MK	MTL
	6.4	2.7	48	96	17	41

57

Dogpatch Hurley 26H

Homo Polled PMC807217 MGZ 26H 15/01/2020

SIRE

KASS/CJB QUIET RIOT ET
KASS/CJB FAMOUS 6038 ET
KASS MS JOSIE T38

DAM

CSS SIR GRIDMAKER 2W
DOGPATCH CRYSTAL 94E
DOGPATCH CRYSTAL 94B

CE	BW	NOV. 25 WT	FEB. 15 WT	AOD
U	93	1040	1365	3

EPDS	CE	BW	WW	YW	MK	MTL
	3.3	3.1	47	83	16	39



Our only Famous bull in this year's offering, but what a gem. Hurley starts off with a smaller head and front end then explodes into a deep, wide barrel top and strong quarter. His square hip and straight back really reflects his sires show winning qualities. A very comfortable birth weight and great growth numbers make this pen favorite one that will attract a lot of attention on sale day.

57

Red Monsoon...get in on the ground floor of this rising star. The Monsoon pedigree is new to the Charolais breed and a red one to boot is definitely a rare and unique opportunity. With tons of calving ease built into this pedigree and a solid red matron to boot, Harkin is surely going to lead his new owner into a bright future. The Monsoon offspring have a flawless balance of power and eye appeal. We thought Harkin was smooth polled until we shaved his head and found he has very small scurs.



58 **Dogpatch Harkin 50H**
 Scurred QSMC807220 MGZ 50H 15/01/2020

<u>SIRE</u>		<u>DAM</u>	
D R REVELATION 467	DOGPATCH TRIPLE X 36S		
D R MONSOON 45	DOGPATCH LILY 61X		
DR ALEXIS 412 ET	MSW CHIANTI 61P		

	CE	BW	NOV. 25 WT	FEB. 15 WT	AOD
U		96	1085	1365	10

EPDS	CE	BW	WW	YW	MK	MTL
	7.7	-1.2	30	61	26	41

59 **Dogpatch Hoover 296H**
 Homo Polled PMC807176 MGZ 296H 01/03/2020

<u>SIRE</u>		<u>DAM</u>	
JWX DOWNTOWN 7C	WHITECAP LAREDO 232T		
MXS RICHMOND 722E	RPJ MATTIE 991W		
MXS MAUDE 284Z	RPJ MATTIE 507R		

	CE	BW	NOV. 25 WT	FEB. 15 WT	AOD
U		103	958	1305	11

EPDS	CE	BW	WW	YW	MK	MTL
	3.0	1.1	51	98	23	48

A young herd sire in the making. Hoover is a ¼ brother to the \$18,000 Dogpatch Fiesta bull working for Ryan Batrud in Alberta. Like his brother, Hoover has the big solid hoof, the big volume middle and strong quarter. With the same luxurious hair coat and numbers that will cause your wallet to explode when his calves come to town. His dam was purchased out of the Perrot-Martin dispersal and still can produce exceptional calves at her age.





Power Bull Lotto. You don't have to win the lottery to cash in here. This thick made unit has got the frame to work on the big cows and will sire those exceptionally heavy weaning weight calves come fall time. A long body results in a long stride and this bull can move like a cat and will be able to cover the big pastures. From high performance parents comes high performance offspring. Great weights and a nice spread in his numbers ensures Hamlet will benefit his new owners. Recommended for mature cows.

60**Dogpatch Hamlet 65H**

Homo Polled PMC807195 MGZ 65H 01/03/2020

SIRE

JWX DOWNTOWN 7C
MXS RICHMOND 722E
MXS MAUDE 284Z

DAM

MERIT 8770U
DOGPATCH JEWEL15Y
ROLLING D CROWN JEWEL 504R

CE	BW	NOV. 25 WT	FEB. 15 WT	AOD
U	108	1010	1405	9

EPDS	CE	BW	WW	YW	MK	MTL
	4.9	1.7	46	95	19	43

61**Dogpatch Hagrid 20H**

Homo Polled PMC807225 MGZ 20H 23/01/2020

SIRE

JWX DOWNTOWN 7C
MXS RICHMOND 722E
MXS MAUDE 284Z

DAM

MVY ALL STAR 61A
DOGPATCH PATTY 31D
MNE PATTY 78P

CE	BW	NOV. 25 WT	FEB. 15 WT	AOD
U	97	964	1300	4

EPDS	CE	BW	WW	YW	MK	MTL
	2.8	2.6	51	101	13	38



His name was no accident, if you are familiar with the Harry Potter movies, you will know Hagrid was big and bold. This dude is a tank. Extremely deep and soggy this bull will produce the loose hided, easy fleshing calves with tons of middle, butt and hair. A cowboy's bull and a cattle buyer's dream! An excellent string of EPDs to boot makes Hagrid a must have on sale day.

Great cross. For those guys wanting to try a Charolais bull, Hector is a great choice especially for an Angus based herd. A choice birth weight and ample growth puts some punch into the calves and ultimately, pounds on the scale. The Angus cows will poll all the calves and the Char cross will add the extra pounds and extra premiums paid for your calf crop. He is built right to work on any herd. We are confident that if you aren't already hooked on Charolais, Hector will win you over.



62

62 Dogpatch Hector 70H
Homo Polled PMC807228 MGZ 70H 27/01/2020

SIRE MVY ALL STAR 61A
DOGPATCH GILLETTE 7E
HC WHIRLWIND 927W

DAM PLESANT DAWN RIO136X
DOGPATCH KATE 70Z
QCR PUSSYCAT 25P

CE	BW	NOV. 25 WT	FEB. 15 WT	AOD
U	102	894	1420	8

EPDS	CE	BW	WW	YW	MK	MTL
	3.2	1.1	41	84	18	38

63 Dogpatch Halifax 42H
Homo Polled PMC807223 MGZ 42H 15/01/2020

SIRE JWX DOWNTOWN 7C
MXS RICHMOND 722E
MXS MAUDE 284Z

DAM MVY ALL STAR 61A
DOGPATCH CRYSTAL 42C
DOGPATCH CRYSTAL 69Z

CE	BW	NOV. 25 WT	FEB. 15 WT	AOD
U	93	1125	1415	5

EPDS	CE	BW	WW	YW	MK	MTL
	5.8	0.7	48	96	16	40

Low BW/High CE. Halifax has got the bases covered. With a low birth weight EPD and a high calving ease EPD you know the calves will come easy and take off from there. Weaning off at over 900 lbs. and over 1200 lbs. before his first birthday, you know he has got it going on. A moderate frame, smooth polled head and packed full of guts and tremendous volume. He is one of the deepest bulls in the pen and really presses down on the scales. Mark him in your sale day book!



63



Forden Fairview Farm



We enjoy the purebred business for the people we meet along the way and the opportunity to showcase our genetics to breeders and commercial cattlemen and women alike. We appreciate the confidence of those who have supported us over the years and offer our thanks in advance to those with new inquiries this year.

Our program is very diverse, consisting of red, black, fullblood and Fleckvieh cattle, essentially offering all facets of the Simmental breed in one place. We have some new genetics on offer this year with our Darwin and Warrior sons which we think you will like. Each year we invest in genetic testing to remove the guess work for you. All bulls are DNA tested for color, dilutor and polled or are known by pedigree.

All bulls are Express Verified and treated with Pyramid FP 5 Presponse spring and fall. The bulls also receive double vaccination of fuso-gard for prevention of foot rot.

We'd like to invite everyone to our Bull Pen Open House at the farm March 20 and 21 from 1:00 – 5:00 PM. This is a great opportunity to view the bulls in their environment as well as walk through our cow herd to see the maternal strength that comes along with these bulls. As was the case with last year and due to the restrictions, we encourage you to stop at the farm to see the bulls ahead of the sale and take some extra time with us to discuss which bulls will work in your program. Visitors are welcome any time, so if you can't make it for the open house, please do stop by whenever it's convenient.

Like us on Facebook "Forden Fairview Farm – Simmentals" to follow our program. Videos will be available on our facebook page in early March.



Like us on Facebook:
Forden Fairview Farm -
Simmentals

*Lyle, Leanne, Carter, Declan & Mara
Ken & Twila*

Simmental Breed Averages

EPDS	CE	BW	WW	YW	MILK
	6.9	3.8	75.3	110.6	28.6



64



Maternal Grand sire:
KUZ Mr Colossal 427Z



Dam:
Grinalta's Honey DPF64D

In the spring of 2019, we were looking for an outcross polled fleck bull. We acquired a semen pack on Sibelle Pol Darwin as he was a heavy muscled, easy fleshing, cherry red bull from the great Sibelle program in Quebec. We flushed two of our homo polled donor cows to him that spring and bred some other fleck cows as well. All his calves demonstrate extra stoutness right from birth. True to their sire, they are heavy muscled, wide topped and powerful. Charles' dam is our Honey cow that we selected in the spring of 2017 when we had pick of the open heifers at Grinalta Farms. We have a full sister in the replacement group that is a standout. Charles offers outcross genetics to much of the Fleckvieh breed and is worth the drive to see him in the flesh.

64

Fairview **Charles 465H**

Hetero Polled Fullblood PT1325743 FDN 465H 25/01/2020

HETEROZYGOUS POLLED. NON DILUTOR. 100% FLECKVIEH.

BW	205 WT	365 WT	EPDS	CE	BW	WW	YW	MK
98	718	1414		5.7	6.2	77.5	110.8	37.5

SIRE
SIBELLE SPARTACUS 8A
SIBELLE POL DARWIN 21F
SIBELLE POL MOLLY 7B

DAM
KUZ MR COLOSSAL 427Z
GRINALTA'S HONEY DPF64D
GRINALTA'S HONEYOAK PFF64D



Dam of Lots 65 & 66:
KEATO PLD Eloquence 18E



Selling Choice

65

Fairview **Theory** 218H

Homo Polled Fullblood PT1325747 FDN 218H 15/01/2020

BW	205 WT	365 WT	EPDS	CE	BW	WW	YW	MK
90	703	1207		10.3	2.7	71.9	97.4	34.6

HOMOZYGOUS POLLED. NON DILUTOR. 100% FLECKVIEH.

66

Fairview **Evolution** 318H

Homo Polled Fullblood PT1325748 FDN 318H 18/01/2020

BW	205 WT	365 WT	EPDS	CE	BW	WW	YW	MK
103	714	1324		7.2	3.2	62.3	82.6	34.6

HOMOZYGOUS POLLED. NON DILUTOR. 100% FLECKVIEH.



Sire of Lots 64, 65 & 66:
SIBELLE POL Darwin 21F



SIRE OF 218H & 318H
SIBELLE SPARTACUS 8A
SIBELLE POL DARWIN 21F
SIBELLE POL MOLLY 7B

DAM OF 218H & 318H
KEATO PLD CLASSIFIED 10A
KEATO PLD ELOQUENCE 18E
KEATO BROOK 8B

Theory and Evolution are two very unique individuals. It's not every day you can find homo polled 100% Fleckvieh herd bulls with this much depth, muscle shape and pigment. A few years ago we set out to acquire homo polled Fleckvieh females which were an outcross to our herd and much of the Fleckvieh breed. In doing so, we were looking to raise homo polled herd bulls for ourselves as the search for such bulls is very difficult. The next piece was acquiring the Darwin semen that quickly became exclusive when he died while at stud as a yearling. The combination of Darwin and Eloquence really worked producing these guys, just as we had hoped. We were also fortunate to get a heifer from the flush that is made the same as her brothers.

We are selling choice on these bulls. We will use in herd semen on the one that is selected and we will walk the other in our program. Theory is deep sided, long bodied, red to the ground and carries the unique dark liver red color. Evolution is wide topped, heavy muscled and cherry red. With their unique pedigree and homo polled status, we believe these bulls have a lot to offer the Fleckvieh breed.



67



**Full Sister to Lot 67:
Fairview Marci 57G**

Kingpin is a transplant son of our Miss Marcus "Marci" donor cow. This will be one of the last opportunities to own a Marci son as she is now deceased. She was a long-bodied, beautiful uddered female with lots of capacity. She is the dam of our Zeus bulls we sold a few years ago whom went on to work in some purebred and top commercial herds. Kingpin is sired by our \$20,000 Philosophy bull that now has AI progeny in some of the top Fleckvieh herds in Canada.

This combination of Marci and Philosophy is one that really works. Marci brings big time performance and

strong maternal traits while Philosophy provides calving ease, pigment and performance as well. Kingpin is super stout with a square wide hip, is free moving and is liver red just like his sire. He has good performance EPDs as well as top Milk EPDs. His sons will make herd bulls and his daughters will be the type one can build a herd around. We have a full sister in our replacement pen that is one to watch for in the future.

67

Fairview Kingpin 57H

Homo Polled Fullblood PT1325749 FDN 57H 20/01/2020

SIRE

DAM

BEE PHANTOM 79B
FAIRVIEW PHILOSOPHY 99E
STARWEST POL ARIEL

DFM MARCUS 14M
TRIPLE F MISS MARCUS 25U
SLS POL-LYNN 75P

68

Fairview Informer 63H

Hetero Polled Fullblood P1333747 FDN 63H 11/01/2020

SIRE

DAM

BEE PHANTOM 79B
FAIRVIEW PHILOSOPHY 99E
STARWEST POL ARIEL

FGAF SELDOM 835L
FAIRVIEW CHERRY 1D
GRINALTA'S CHERRY PFF81S

BW	205 WT	365 WT	EPDS	CE	BW	WW	YW	MK
93	712	1386		5.7	3.8	81.6	119.2	37.9

HOMOZYGOUS POLLED. NON DILUTOR. 100% FLECKVIEH.

BW	205 WT	365 WT	EPDS	CE	BW	WW	YW	MK
92	784	1381		10.7	1.9	68.5	96.5	44.1

HETEROZYGOUS POLLED. NON DILUTOR. 100% FLECKVIEH.



68



Sire: Fairview Philosophy 99E



Dam: Fairview Cherry 1D

cow and has a perfect udder with lots of milk (I don't give that grade easily). Informer's full sister is one of our top bred heifers this year and she will be a key piece in our Fleckvieh program going forward. Philosophy is starting to establish himself in the breed as an easy calving bull with added performance, muscle and pigment while leaving all his offspring polled. Informer has excellent calving ease numbers and with Philosophy and Seldom in the pedigree he would work on heifers, yet he weaned off at 902 lbs. mid-September, so there is no doubt he will sire some excellent calves.



Sire:

Fairview Payroll 19D

We are very pleased with the job Payroll is doing in our program. He is a long-bodied, heavy muscled, highly pigmented bull that is nearly red to the ground. Payroll is a homo polled son of our Sering donor cow who has certainly left her mark on our program. Payroll's daughters in the herd have excellent udders just as all the females in the Sering family. Revenue combines two of our top cow families with Marci and Sering and his dam is a full sister to the Zeus bulls we sold a few years back. Being a twin didn't set him back as he weaned at 875 lbs. mid-September. Revenue will sire tremendous females and powerful bull calves.



69

69

Fairview Revenue 157H

Homo Polled Fullblood P1333779 FDN 157H 16/01/2020

BW	205 WT	365 WT	EPDS	CE	BW	WW	YW	MK
96	786	1416		3.2	6.2	73.1	109.2	38.3

HOMOZYGOUS POLLED. NON DILUTOR. FULL FLECKVIEH.

SIRE

BEE PHANTOM 79B
FAIRVIEW PAYROLL 19D
TRIPLE F SERING 27S

DAM

DOUBLE BAR D LEGEND 87W
FAIRVIEW ZEUNETTE 157D
TRIPLE F MISS MARCUS 25U

70

Fairview Bond 112H

Homo Polled Fullblood P1333687 FDN 112H 27/02/2020

SIRE

BEE PHANTOM 79B
FAIRVIEW PAYROLL 19D
TRIPLE F SERING 27S

DAM

DOUBLE BAR D LEGEND 87W
FAIRVIEW MS LEGEND 2B
LEF WIGBURG 7W

BW	205 WT	365 WT	EPDS	CE	BW	WW	YW	MK
107	743	1337		2.5	6.3	67.4	101.4	37.1

HOMOZYGOUS POLLED. NON DILUTOR. FULL FLECKVIEH.

Bond is a stout made, long-bodied, big nutted herd sire prospect. His full brother was our lead off bull last year going to Robb Farms. Bond is the youngest bull in our offering yet he fits right in. All of these Payroll sons carry the same consistent pigment and color pattern which many fullblood breeders are striving for.



70

71

Fairview Dividend 117H

Homo Polled Fullblood P1333794 FDN 117H 21/02/2020

SIRE

BEE PHANTOM 79B
FAIRVIEW PAYROLL 19D
TRIPLE F SERING 27S

DAM

GRINALTA'S HP ULTRA FF940
FAIRVIEW SAVANNAH 17E
FAIRVIEW MS LEGEND 18B

BW	205 WT	365 WT	EPDS	CE	BW	WW	YW	MK
98	774	1326		3.7	6.4	71.5	104.8	39.1

HOMOZYGOUS POLLED. NON DILUTOR. FULL FLECKVIEH.

These Payroll sons are like peas in a pod. It would be neat to see a pair of them walking the same group of cows. These Fleckvieh bulls will work well on an Angus based herd to produce those blaze-faced crossbred calves. Using Fleckvieh in your breeding program provides maximum heterosis which results in added pounds on your calves come fall.



71



72



Sire:
BEE Phantom 79B

Protege is an easy calving Phantom son going back to a cow we bought from Eagle Ridge Simmentals. The 71B cow has been a solid producer for us. She has two daughters in the herd and two sons have sold through the sale. One was a high seller a couple years ago going to Triple T Diamond Simmentals. Protege is moderate, hairy, has good depth of quarter and is nearly solid red faced. His unique markings are not commonly found in Fleckvieh cattle and one would certainly expect him to add pigment to his offspring.

72

Fairview Protege 81H

Hetero Polled Fullblood P1333750 FDN 81H 20/01/2020

BW	205 WT	365 WT	EPDS	CE	BW	WW	YW	MK
95	674	1296		7.9	2.8	54.4	84.4	35.6

HETEROZYGOUS POLLED. NON DILUTOR. 100% FLECKVIEH.

SIRE

DAM

ANCHOR D VIPER 103W
BEE PHANTOM 79B
BEECH BRO SHE DEVIL 12S

MACKENZIE'S CANE 122Y
FAIRVIEW MS CANE 71D
EAGLE RIDGE BRITTANY 71B



73

73

Fairview Power 66H

Hetero Polled Purebred PG1333685 FDN 66H 19/01/2020

SIRE

DAM

ANCHOR D VIPER 103W
BEE PHANTOM 79B
BEECH BRO SHE DEVIL 12S

DOUBLE BAR D LEGEND 87W
FAIRVIEW MS LEGEND 96B
FDN WANETA 96W

BW	205 WT	365 WT	EPDS	CE	BW	WW	YW	MK
101	728	1362		4.9	5.0	70.6	107.1	36.7

HETEROZYGOUS POLLED. NON DILUTOR. HIGH % FLECKVIEH.

There are always some bulls that stand out in the pen and Power is one of them. All winter he continues to impress us with his wide hip, free moving ability and his thickness from front to back. Our Legend daughters are good uddered females that continue to raise top progeny. A ¼ brother sold in last year's sale to Justin Holodniuk and he said his bull is doing exceptionally well and will be a powerful herd sire.

74

Fairview Propel 165H

Homo Polled Fullblood P1333790 FDN 165H 05/02/2020

SIRE

DAM

ANCHOR D VIPER 103W
BEE PHANTOM 79B
BEECH BRO SHE DEVIL 12S

KUZ MR COLOSSAL 427Z
GRINALTA'S RUTH PFF65D
GRINALTA'S MISS STARWEST FF65A

BW	205 WT	365 WT	EPDS	CE	BW	WW	YW	MK
82	702	1238		10.2	2.2	56.6	84.2	40.5

HOMOZYGOUS POLLED. NON DILUTOR. 100% FLECKVIEH.

We have purchased some genetics, either live or embryos, from the Grinalta Farms program over the past few years to diversify the genetic base of our polled fleck program. Propel is a stocky, stout-made, hairy beef bull. We used a brother of his as clean up on some heifers last year and Propel would fill the same role with his low birth weight and top EPDs for CE and BW. We sold Phantom last year to Kulyk Simmental, so if you've been thinking about using a Phantom son in your program now is the time to take one home.



74



Sire:
SIBELLE POL Darwin 21F

Beagle is another powerful, thick made Darwin son that is full of meat and muscle. He has a real wide top and thick round quarter similar to his brothers that start our section of the catalogue. His dam is an excellent young female from our Sering cow family. These females have good udders with lots of milk and are always some of our best producers. Beagle will mature into an excellent herd sire who will make an impact on his new herd.



75

75

Fairview Beagle 21H

Horned Fullblood 1333826 FDN 21H 21/01/2020

BW	205 WT	365 WT	EPDS	CE	BW	WW	YW	MK
85	751	1359		8.6	3.0	68.2	97.0	40.1

HORNED. NON DILUTOR. FULL FLECKVIEH.

SIRE

SIBELLE SPARTACUS 8A
SIBELLE POL DARWIN 21F
SIBELLE POL MOLLY 7B

DAM

BEE PHANTOM 79B
FAIRVIEW SOPHIE 16E
MISS FDN LEGEND 19Z

76

Fairview General 50H

Hetero Polled Fullblood P1333745 FDN 50H 15/01/2020

SIRE

BEE PHANTOM 79B
FAIRVIEW PHILOSOPHY 99E
STARWEST POL ARIEL

DAM

PSE VOYAGER FF
PSE MS POLLED DAWN FF
PSE ZELENA FF

BW	205 WT	365 WT	EPDS	CE	BW	WW	YW	MK
90	780	1257		10.2	1.0	62.5	81.9	41.3

HETEROZYGOUS POLLED. DILUTOR. 100% FLECKVIEH.

General is a red faced Philosophy son whose dam came from Elliott Simmentals a few years ago. She has been a solid producer with her first bull working in the heifer pen at Future Legends Ranch, a daughter in our herd and then this fella. General has top EPDs for calving ease, birth weight, milk and MCE. Look for his calves to come easy and his daughters to be very good.



76

77

Fairview Partner 3H

Horned Fullblood 1333777 FDN 3H 31/01/2020

SIRE

ANCHOR D VIPER 103W
BEE PHANTOM 79B
BEECH BRO SHE DEVIL 12S

DAM

GRINALTA'S UNIQUE DPFF81Z
FAIRVIEW MS UNIQUE 2C
LEF WIGBURG 7W

BW	205 WT	365 WT	EPDS	CE	BW	WW	YW	MK
96	727	1263		7.6	3.5	57.0	83.8	37.9

HORNED. NON DILUTOR. 100% FLECKVIEH.

Partner is a stylish, cherry red Phantom son with good length and thickness throughout. His dam is a very nice uddered cow that is our only Unique daughter in the herd. Temperament is something we focus on with our cattle and especially our bulls. Partner is one of the quietest in the pen and very easy to handle.



77



78



**Maternal Brother sold in 2020:
Fairview Mastermind 92G**

Investor is a powerful Payroll son that carries the extra length and muscle true to his sire. He was a top ranked bull at weaning and was the #1 ranked bull at yearling time. His dam is a very productive Zeus daughter who raised a high selling black blaze bull that went to Keith and Jodi Blight last year. She has another bull this year off our new Eclipse herd sire and he looks promising. With Investor's performance and tremendous maternal strength in his pedigree there is no doubt he will sire a strong set of calves.

78

Fairview Investor 92H

Homo Polled Purebred PG1333795 FDN 92H 20/01/2020

HOMOZYGOUS POLLED. NON DILUTOR. 75% FLECKVIEH.

BW	205 WT	365 WT	EPDS	CE	BW	WW	YW	MK
95	817	1598		6.2	4.6	83.6	133.0	40.8

SIRE

BEE PHANTOM 79B
FAIRVIEW PAYROLL 19D
TRIPLE F SERING 27S

DAM

FAIRVIEW ZEUS 57Z
FAIRVIEW MADISON 92E
MISS FAIRVIEW 91X



79

79

Fairview Currency 70H

Homo Polled Purebred PG1333801 FDN 70H 30/01/2020

SIRE
BEE PHANTOM 79B
FAIRVIEW PAYROLL 19D
TRIPLE F SERING 27S

DAM
DOUBLE BAR D LEGEND 87W
FAIRVIEW ELIANA 72E
MISS FDN LOUISVILLE 53Y

BW	205 WT	365 WT	EPDS	CE	BW	WW	YW	MK
98	717	1351		3.2	6.0	70.6	106.3	34.0

HOMOZYGOUS POLLED. NON DILUTOR. 75% FLECKVIEH.

This combination of genetics sure works well for us. Payroll bred to Legend daughters has produced some awesome feature bulls in last year's sale and again this year. Currency is another long bodied, hairy, big nutted Payroll son. There are two things every Payroll son has, that being extra length and large testicles. His sons are well equipped to cover more cows with success. Currency will sire some awesome calves and will add that blaze face to many of them.

80

Fairview Capital 110E

Homo Polled Purebred PG1329196 FDN 110H 03/02/2020

SIRE
BEE PHANTOM 79B
FAIRVIEW PAYROLL 19D
TRIPLE F SERING 27S

DAM
SBSF CHEROKEE 5C
CSCC EMMARETTA 373E
CSCC MISS 345C

BW	205 WT	365 WT	EPDS	CE	BW	WW	YW	MK
88	734	1312		9.8	2.7	63.5	96.6	42.0

HOMOZYGOUS POLLED. NON DILUTOR. HIGH % FLECKVIEH.

There are seven Payroll sons in the sale and they are all very similar in design. We have had a couple offers to purchase Payroll but we have yet to bite as we really like the sons he produces and his daughters are making good cows. Capital's dam produced the high selling Philosophy son in last year's sale going to Czech V7 Ranch. She is another young cow with a bright future in our program.



80



Fairview Mountain 109H

Mountain is an early maturing, thick made, powerful Payroll son. His dam is owned by Carter, Declan and Mara, and she continues to crank out the bulls time and again for the kids. No matter what herd bull she is mated to the results are excellent. Even though he is one of the younger bulls in the group, he weaned off at 830 lbs. in mid-September. Mountain will definitely add pay weight to his calves in the fall so he is an investment worth making.



81

81

Fairview Mountain 109H

Hetero Polled Purebred PG1325398 FDN 109H 11/02/2020

SIRE

BEE PHANTOM 79B
FAIRVIEW PAYROLL 19D
TRIPLE F SERING 27S

DAM

ERIXON GRAND PRIX 125A
FAIRVIEW MS GRANDPRIX 9C
FDN WHITNEY 90W

BW	205 WT	365 WT	EPDS	CE	BW	WW	YW	MK
99	792	1461		7.7	3.5	70.1	109.1	39.2

HETEROZYGOUS POLLED. NON DILUTOR. 50% FLECKVIEH.

82

Fairview Protector 13H

Homo Polled Purebred PG1333772 FDN 13H 15/01/2020

SIRE

ANCHOR D VIPER 103W
BEE PHANTOM 79B
BEECH BRO SHE DEVIL 12S

DAM

TESS DERRINGER 105Z
FAIRVIEW MS DERRIGNER 53C
MISS FDN RACHAEL 73R

BW	205 WT	365 WT	EPDS	CE	BW	WW	YW	MK
102	740	1420		7.0	4.5	73.8	118.5	29.8

HOMOZYGOUS POLLED. NON DILUTOR. 50% FLECKVIEH.



Sire:

BEE Phantom 79B

One place Phantom always worked so well for us was on our red and black cows to make these blaze faced bulls. Every year we get inquiries from commercial cattlemen looking to add the blaze face to their calves. Whether it's these blaze bulls or the goggle eyed bulls, they will add some chrome to your calves while also adding more muscle, more hair and more milk. Protector is a powerful bull with a wide, deep quarter. He will mature into a big framed bull that will be a dependable herd sire.



82



**Full Brother to Lots 83 & 84:
Fairview Professor 51G**

83

Fairview Packer 51H

Polled/Scurred Purebred PG1333781 FDN 51H 13/01/2020

BW	205 WT	365 WT	EPDS	CE	BW	WW	YW	MK
92	737	1375		6.6	5.0	71.3	113.5	34.4

POLLED/SCURRED. NON DILUTOR. 50% FLECKVIEH.

84

Fairview Pace 151H

Homo Polled Purebred PG1333831 FDN 151H 13/01/2020

BW	205 WT	365 WT	EPDS	CE	BW	WW	YW	MK
87	742	1280		6.6	5.0	71.3	113.5	34.4

HOMOZYGOUS POLLED. NON DILUTOR. 50% FLECKVIEH.

SIRE OF 51H & 151H

ANCHOR D VIPER 103W
BEE PHANTOM 79B
BEECH BRO SHE DEVIL 12S

DAM OF 51H & 151H

ERIXON GRAND PRIX 125A
FAIRVIEW MS GRANDPRIX 52D
FAIRVIEW MS DERRINGER 93B

These two bulls are standouts in the pen, and you would never guess they were born as twins. Their dam raised 51H and a foster mom raised 151H. They weaned off at 829 lbs. and 835 lbs. respectively, so they easily earned their way into the bull pen and are always picked out by visitors. Packer is dark red, long bodied with a big deep hip. Pace carries the blaze face typical with this fleck cross, is hairy, thick-butted with a wide top. Their dam is one of our top young cows that has quite the production record thus far. Her first daughter sold in Simmsational in 2019 going to Creekside Simmentals, her son sold last year to Buick Farms and these sons are sure to be favorites on sale day.



**Maternal Sister to Lots 83 & 84:
Fairview Eve 51F**

84



Sire: Crossroad Warrior 131F



Dam: Fairview Daisy 83E



85

We selected Warrior from the great Crossroad program in 2019 where he was a sale feature and one of the high selling bulls. In his catalogue he was described as "a meat machine, full of rib, top, has a big hip and quarter, large testicles and a good size foot on him too." When we saw his Bartender dam we knew we had to own him and we are sure glad we did. Warrior has developed into a powerful herd bull and when Chris toured the bulls this winter his comments on Warrior were "that's a very impressive bull." Sword is super deep, super stout and will be a standout on sale day. His dam is an excellent Redstream daughter that has an impeccable udder. In her young career she has produced a top bred heifer, this fella and a full sister this year that is sure to be good. The 22X granddam is also one that can crank out the good ones. She has produced top herd bulls going to Double T Simmentals, Jason Eckel and Wayne Harding/Sheila Smith. We also have two daughters working in our herd plus there are daughters working at Bergman Family Farm and Fox Hills Simmentals. There is no doubt Sword will sire a strong set of calves and you will want to keep every one.

85

Fairview Sword 82H

Homo Polled Purebred PG1333799 FDN 82H 04/02/2020

BW	205 WT	365 WT	EPDS	CE	BW	WW	YW	MK
94	813	1352		6.5	3.6	75.5	106.6	32.2

HOMOZYGOUS POLLED. NON DILUTOR.

SIRE

DAM

CROSSROAD RED WALKER 52D SVS REDSTREAM 60X
CROSSROAD WARRIOR 131F FAIRVIEW DAISY 83E
 CROSSROAD ABSOLUTE 386A MISS TRIPLE F 22X

86

Fairview Shield 95H

Homo Polled Purebred PG1333815 FDN 95H 12/02/2020

SIRE

DAM

CROSSROAD RED WALKER 52D BEE PHANTOM 79B
CROSSROAD WARRIOR 131F FAIRVIEW MELANIE 95F
 CROSSROAD ABSOLUTE 386A MISS FDN LOUISVILLE 92A

BW	205 WT	365 WT	EPDS	CE	BW	WW	YW	MK
82	830	1494		6.6	4.7	79.9	118.5	32.6

HOMOZYGOUS POLLED. NON DILUTOR.

Shield was born a twin to a first calf heifer and what a job she did. He is packed with performance, weaning off at 776 lbs. and ranking #1 in the entire group for ADJ WWT. This dark red Warrior son is impressive on paper and even more so in person. When Chris toured the pen in January he rated this fella very high. With his dam being a fleck influence Phantom daughter, one can expect his offspring to rise above the rest just as he did.



86

87

Fairview Arrow 41H

Hetero Polled Purebred PG1329207 FDN 41H 09/02/2020

SIRE

DAM

CROSSROAD RED WALKER 52D ACS LOUISVILLE 666S
CROSSROAD WARRIOR 131F MISS FDN LOUISVILLE 11Z
 CROSSROAD ABSOLUTE 386A FORDEN MINNY 11M

BW	205 WT	365 WT	EPDS	CE	BW	WW	YW	MK
98	797	1359		5.7	3.9	73.7	101.3	31.1

HETEROZYGOUS POLLED. NON DILUTOR.

Arrow is another solid coloured, big bodied, hairy Warrior son who exhibits the muscle expression and depth of quarter true to this sire group. His dam is a black baldie cow that is sound footed and good uddered with lots of milk. She has two daughters working in purebred herds and another son sold to Flaman Cattle Co. in last year's sale. Arrow will definitely add quality and extra pounds to your calf crop.



87



88



Sire:
MRL Sleep Easy 140D

Sherman is a real feature bull. He is soft made, free moving with a big, deep quarter and loads of capacity. His sire, MRL Sleep Easy goes back to the great 836W donor cow making Sleep Easy a brother to MRL Capone and MRL El Tigre. Sherman possesses some serious performance as he started off at a mere 80 lbs. and weaned at 861 lbs. His EPD profile also backs up this curve bending quality as he is above breed average in all traits, being in the top 25% or better on many. Sherman is a very attractive red baldie bull loaded with maternal strength you can count on.

88

Fairview Sherman 61H

Homo Polled Purebred PG1333828 FDN 61H 07/01/2020

BW	205 WT	365 WT	EPDS	CE	BW	WW	YW	MK
80	785	1441		8.2	1.8	77.6	121.6	34.2

HOMOZYGOUS POLLED. NON DILUTOR.

SIRE

KUNTZ SHERIFF 8A
MRL SLEEP EASY 140D
RL MISS 836W

DAM

BEE PHANTOM 79B
FAIRVIEW BIANCA 31E
MISS FDN REDSTREAM 1A



89

89

Fairview King 5H

Homo Polled Purebred PG1333829 FDN 5H 17/01/2020

SIRE

LFE VIPER 455U
NCB COBRA 47Y
NCB MISS DREAM 22T

DAM

ERIXON GRAND PRIX 125A
FAIRVIEW ELLEN 55E
MISS FDN REDSTREAM 45A

BW	205 WT	365 WT	EPDS	CE	BW	WW	YW	MK
85	782	1478		4.7	2.7	84.9	131.0	29.4

HOMOZYGOUS POLLED. NON DILUTOR.

King is a rugged, long-bodied, son of the great Cobra bull. His performance EPDs are in the top of the breed and that's no surprise with Grand Prix and Redstream in his pedigree. His dam comes from a long line of top producing females in our Erica cow family which is foundational to our purebred program. King has a lot of potential and is an excellent choice for your next herd sire.



90

90

Fairview Lancaster 115H

Homo Polled Purebred PG1333798 FDN 115H 22/01/2020

SIRE

MRL DISCOVERY 21A
MRL AVENGER 19C
MRL MISS 305T

DAM

WFL ABSOLUTE 51Y
FAIRVIEW KYLIE 115E
FAIRVIEW MS GRANDPRIX 15C

BW	205 WT	365 WT	EPDS	CE	BW	WW	YW	MK
98	729	1363		8.2	3.8	72.8	109.7	19.3

HOMOZYGOUS POLLED. NON DILUTOR.

Lancaster is the only red Avenger son in the sale and one of the last Avenger sons available as we unfortunately lost him in the fall of 2019. His dam is part of our Karma cow family who formed the foundation of our black program. Lancaster's dark red colour, length of spine and thickness make him an attractive herd bull prospect.



**Full Brother sold in 2019:
Fairview Prodigy 11F**

Priority is the heavy weight in the pen and also a favourite with visitors. He is a powerful, deep ribbed, deep quartered meat machine. We can't say enough about these fleck cross bulls. They are the best way to incorporate performance into your calves while keeping the solid colour on your calf crop. Priority has a very small scur on one side of his head. It's not something that will show up on his calves before market and with scurs you will very rarely ever see a scurred female because of the way the genetics work. A full brother sold to Teale Farms in 2019 and Adam said he's their favorite of all the bulls they have from us.



91

91

Fairview Priority 11H

Hetero Polled Purebred BPG1333770 FDN 11H 16/01/2020

HETEROZYGOUS POLLED. HETEROZYGOUS BLACK. 50% FLECKVIEH.

BW	205 WT	365 WT	EPDS	CE	BW	WW	YW	MK
102	805	1525		6.5	4.2	75.9	124.1	40.4

SIRE

ANCHOR D VIPER 103W
BEE PHANTOM 79B
BEECH BRO SHE DEVIL 12S

DAM

ERIXON GRAND PRIX 125A
FAIRVIEW MS GRANDPRIX 45C
MISS FAIRVIEW 94X

92

Fairview Parker 8H

Hetero Polled Purebred BPG1333785 FDN 8H 28/01/2020

SIRE

ANCHOR D VIPER 103W
BEE PHANTOM 79B
BEECH BRO SHE DEVIL 12S

DAM

TESS DERRINGER 105Z
FAIRVIEW MS DERRINGER 48D
MISS FDN LOUISVILLE 47Y

BW	205 WT	365 WT	EPDS	CE	BW	WW	YW	MK
108	704	1434		4.2	6.2	73.2	120.5	30.8

HETEROZYGOUS POLLED. HETEROZYGOUS BLACK. 50% FLECKVIEH. Parker is another big nutted, big butted Phantom son. There are nine Phantom sons in the sale and this is one of the last opportunities to take one home as Phantom now walks the pasture near North Battleford, SK. Parker's dam took him overdue hence the extra birth weight however we would expect his calves to come easy as Phantom calved very well for us the six years we had him.



92

93

Fairview Payout 54H

Homo Polled Purebred BPG1333782 FDN 54H 26/01/2020

SIRE

ANCHOR D VIPER 103W
BEE PHANTOM 79B
BEECH BRO SHE DEVIL 12S

DAM

TESS DERRINGER 105Z
FAIRVIEW MS DERRINGER 53D
MISS FDN RACHAEL 73R

BW	205 WT	365 WT	EPDS	CE	BW	WW	YW	MK
97	719	1271		7.5	4.2	67.8	103.9	29.7

HOMOZYGOUS POLLED. HETEROZYGOUS BLACK. 50% FLECKVIEH. Payout is a sharp looking, fleck influence bull. His granddam was on the farm until the age of 14 and part of the Erica cow family which I spoke about earlier. Payout's dam has done well producing herd bulls in each of her first three years. Brothers are working for Thomas and Patty Michaluk and Cashlin Ross.



93



94



Sire:

MRL Avenger 19C

Our son Carter has really taken to naming bulls with me. Each herd sire has a theme and his sons are named accordingly. So when 31H was born as an Avenger son, Carter went to his fighter jet book and said "Dad, we should call him Blackbird," and the name stuck. Starting out as a 77 lb. twin, he has done very well to be the third ranked bull for yearling weight with an adjusted YWT of 1520 lbs. Blackbird is a powerful specimen with a wide top and will mature into a big framed, sound footed bull whose daughters will have excellent udders just like his dam. He needs to be seen in the flesh to be appreciated, as his picture doesn't do him justice.

94

Fairview **Blackbird 31H**

Hetero Polled Purebred BPG1329208 FDN 31H 11/01/2020

BW	205 WT	365 WT	EPDS	CE	BW	WW	YW	MK
77	714	1520		5.3	4.1	72.1	109.8	25.1

HETEROZYGOUS POLLED. HETEROZYGOUS BLACK.

SIRE

MRL DISCOVERY 21A
MRL AVENGER 19C
 MRL MISS 305T

DAM

SVS REDSTREAM 60X
MISS FDN REDSTREAM 1A
 FDN WIKI 31W



95



95

Fairview **Dakota 60H**

Hetero Polled Purebred BPG1329203 FDN 60H 14/02/2020

BW	205 WT	365 WT	EPDS	CE	BW	WW	YW	MK
101	749	1371		5.0	5.3	69.1	103.4	21.1

HETEROZYGOUS POLLED. HETEROZYGOUS BLACK.

Dakota is a black blaze faced Avenger son with style and presence. Being a mid-February bull he is one of the youngest in the pen but he fits right in. He is long bodied, stout made and will sire a nice set of calves with some chrome.

96

Fairview **Axe 93H**

Homo Polled Purebred BPG1325396 FDN 93H 12/02/2020



96

BW	205 WT	365 WT	EPDS	CE	BW	WW	YW	MK
103	771	1345		3.9	5.3	72.7	101.3	28.2

HOMOZYGOUS POLLED. HETEROZYGOUS BLACK.

Axe is the only black Warrior son and is he ever a good one. His powerful, long bodied dam is dad's favorite black cow that is also the great granddam of Lots 83 and 84 (51H and 151H). Axe is real stout, big-middled and sound footed. A maternal brother sold to Jason Lasota in 2019. He may be the last of our bulls in the catalogue but he will be high on your list.



 Like us on Facebook: Goodview Gelbvieh

Welcome to the 17th Annual Best of the Breeds Bull Sale. We are very excited about the bulls we will have on offer once again this year. We will have both red and black bulls that will work both on heifers, as well as performance bulls to produce those scale busting steers. Our bulls come from good footed, neat uddered, low maintenance cows. At Goodview we put a lot of emphasis on our cows, so you can buy with confidence knowing that the bull you purchased is from a sound, problem free cow herd.

Gelbvieh is a continental breed that has very strong maternal traits such as docility and rich milk that is produced in tight, correct udders. Gelbvieh will add that extra muscle to give your calves the extra pounds you're looking for at sale time. Gelbvieh calves are born with vigor, which is one of the reasons Gelbvieh influenced females wean more pounds of calf per cow exposed. Use Gelbvieh bulls in your crossbreeding program to get early maturing, long lasting females, as well as sale topping steer calves.

We continue to use a high fiber developer program. We wean the bulls off on oats then after 60 days they are pail fed a bull developer pellet along with barley silage and grass alfalfa hay. This diet develops a healthy rumen, while maintaining good long-term health. We target a 3.5 lb. average gain to develop good footed, long lasting bulls that will last for their new owners.

Please join us on March 28th in Yorkton to evaluate our bulls and we can talk about your bull needs. If you can't make the sale, feel free to call or stop by anytime to tour the bull pen and the cows with their 2021 calves at side. Join us Saturday evening at our hotel and stay the night. If you purchase a bull from Goodview Gelbvieh, we will pay for your one-night stay. Please join us for an afternoon of visiting and cattle viewing on Sunday, March 14 for our customer appreciation day and bull viewing.

CUSTOMER APPRECIATION DAY AND BULL VIEWING SUNDAY, MARCH 14 AT 1:00 PM!

Attend our open house, call, text or tour the bulls at any time before the sale and be entered for a chance to win a \$500 sale credit to be used at this year's sale.

Blair, Lorie, Courtney and Kelsey

Gelbvieh Breed Averages

GEST (DAYS)	EPDS	CE	BW	WW	YW	MK	TM
283		12	0.5	60	86	21	51



Sire of Lots 97, 98, 103, 106, 107, 109 & 110:

FLAD FLAD Fladeland Element 21E



Dam of Lot 97:

BLB Goodview PLD Heather



BLB Headline 27H is a standout in our pen that checks all the boxes. His huge rib shape and soggy middle are two traits that can't be missed. He is sure to produce those soft, easy doing females that are sought after in the industry. His Outback 142X sired dam, BLB 4A is a dream cow. She has produced only bulls all from different sires working in progressive commercial herds, as well as one to McCoy Cattle Co. and BLB Diplomat co-owned with Fladeland Livestock. She will be entering the donor program here at Goodview. 27H's sire, FLAD Element 21E has done an outstanding job producing offspring with hair, color, soft middle and sons with above average testicles. Headline has over 40 cm testicles with a modest 84 lb. BW. Whether you're a seedstock breeder or progressive commercial producer, 27H will move your program forward. **Retaining half semen interest. HOMO POLLED.**

97

BLB Goodview Headline 27H

Homo Polled CDGV172912 BLB 27H 19/02/2020

SIRE

DAM

JRI GUNG HO 282C51

SLC OUTBACK 142X

FLAD FLAD FLADELAND ELEMENT 21E BLB GOODVIEW PLD HEATHER

FLAD FLADELAND SADIE 28X

BLB GOODVIEW PLD HEATHER 27Y

BW	OCT. 5 WT	ADJ. 365 WT	GEST (DAYS)
84	902	1369	280

EPDS	CE	BW	WW	YW	MK	TM
	15	-1.9	58	88	23	52



98



Maternal Brother of Lot 98 & 2019 Futurity Champion: BLB Grid Iron 16G

BLB Hellcat 26H is another standout FLAD Element 21E son that has a bright future. He is a maternal brother to the 2019 Futurity Champion, Goodview Grid Iron. Hellcat stands at the top of our pen in both eye appeal and performance. Exhibiting an ADG of 4.25, WDA of 4.12 and indexing at 113. BLB 26H has a big top, tons of hair, a big middle and a scrotal of 42cm. His dam, BLB Winnie 31A is a standout Outback daughter that knocks it out of the park. The Winnie cow family produces very functional and eye appealing cattle. We are excited to see what this bull's future will bring. **Retaining half semen interest. HOMO POLLED.**

98 BLB Goodview **Hellcat** 26H
Homo Polled CDGV172910 BLB 26H 16/02/2020

SIRE JRI GUNG HO 282C51
FLAD FLADELAND ELEMENT 21E FLAD FLADELAND SADIE 28X
DAM SLC OUTBACK 142X
BLB GOODVIEW PLD WINNIE FRL FIR RIVER WINNIE 73W

BW	OCT. 5 WT	ADJ. 365 WT	GEST (DAYS)
94	913	1472	284

EPDS	CE	BW	WW	YW	MK	TM
	13	-1.0	62	100	21	52

99 BLB Goodview **Hawkeye** 7H
Homo Polled CDGV171430 BLB 7H 18/01/2020

SIRE RWG RIGHT COMBINATION 5506
RWG EXACT COMBINATION 7409 RWG HADIE 3505
DAM DTKF EMOTIONS SUCKER PUNCH
PHG MISS PAPARAZZI C45 PHG PAPARAZZI A68

BW	OCT. 5 WT	ADJ. 365 WT	GEST (DAYS)
96	1028	1299	284

EPDS	CE	BW	WW	YW	MK	TM
	12	0.3	70	95	28	63



99



Sire of Lots 99 & 102: RWG Exact Combination 7409

BLB Hawkeye 7H is another exceptional bull exhibiting a dark red coat, a huge hip and large rib shape. Hawkeye is a son of RWG Exact Combination who has worked very well in our herd. His dam is a Sucker Punch daughter that we purchased from Prairie Hills Gelbvieh in North Dakota. This mating really clicked, and we are excited for his future. We hope to use Hawkeye in our herd at some point. **Retaining half semen interest. HOMO POLLED.**



Sire:
RWG Captain 5701

BLB Heavy Hitter 15H is an extraordinary bull in our pen. A frame score smaller than the average in our pen but the phrase "as wide as he is tall" describes him to a T. A son of BLB Wilma 1W, the senior cow in our herd and easily a top producer who has produced BLB Bud, the sire of BLB Diplomat who is the sire of BLB 39G who makes his home in North Dakota at Prairie Hills Gelbvieh. 15H is sired by RWG Captain who sires progeny that are big middle, heavily muscled and exhibit a beauty disposition. BLB 15H will sire those moderate, big ribbed offspring that the industry wants.



100

100 BLB Goodview **Heavy Hitter 15H**
Polled CDGV172899 BLB 15H 28/01/2020

<u>SIRE</u>		<u>DAM</u>	
BEAS BEAS 2806Z	EGL GARTH J040 ET	BLB GOODVIEW PLD WILMA 1W	BLB GOODVIEW PLD 39P
RWG CAPTAIN 5701			
VG VALLEY MISS TRIX 157T			

BW	OCT. 5 WT	ADJ. 365 WT	GEST (DAYS)
102	950	1375	283

EPDS	CE	BW	WW	YW	MK	TM
	8	3.4	86	132	20	64

101 BLB Goodview **Hall Of Fame 33H**
Homo Polled CDGV172918 BLB 33H 27/02/2020

<u>SIRE</u>		<u>DAM</u>	
PHG DOMINATOR D78	RWG RIGHT COMBINATION 5506	FLAD FLADELAND FORGED IN FIRE 73F ET	FLAD FLADELAND FAME 23F
TIP MISS ANGELA 93W		FLAD FLAD FLADELAND BREW 5B	

BW	OCT. 5 WT	ADJ. 365 WT	GEST (DAYS)
73	807	1378	280

EPDS	CE	BW	WW	YW	MK	TM
	11	0.8	65	94	18	50



Maternal Grand sire of Lot 101:
RWG Right Combination 5506

BLB Hall of Fame 33H is so cool. Liver red in color, huge rib shape and big hipped. He is a moderate framed bull that will work on both heifers and cows, boasting a very low BW of 73 lbs. We purchased his dam, FLAD 23F out of the Function and Finesse Sale from Fladeland Livestock. She is a RWG Right Combination daughter with a perfect udder and teat shape as well as a puppy dog disposition. BLB 33H is a bull that will sire moderate offspring with volume and will be phenotypically correct. Heifer bull. **Retaining half semen interest. HOMO POLLED.**



101



102

102

BLB Goodview Hustler 18H

Homo Polled CDGV172902 BLB 18H 31/01/2020

SIREDAM

RWG RIGHT COMBINATION 5506

SLC OUTBACK 142X

RWG EXACT COMBINATION 7409**BLB GOODVIEW PLD WILMA**

RWG HADIE 3505

BLB GOODVIEW PLD WILMA 1Y

BW	OCT. 5 WT	ADJ. 365 WT	GEST (DAYS)
88	828	1168	286

EPDS	CE	BW	WW	YW	MK	TM
	13	-1.1	60	80	25	55

BLB Hustler 18H is smooth made with a large hip. He is smooth through the shoulder and has a small head. His BW EPD is in the top 20% with a -1.1 and a CE of 13. He won't be a sleep easy heifer bull but believe Hustler will be dual purpose. His Outback sired dam, BLB Wilma 2A exhibits so much volume with above average milk production. She is an absolute work horse with a beauty temperament. 2A has produced many sons working in commercial programs as well as one son to RPS Gelbvieh. The Wilma family have been great producers. Last year four Wilma sons sold in our sale for an average of \$6,000, needless to say this family produces the good ones. 18H is sired by RWG Exact Combination which has made for a cool mating. BW moderator. **HOMO POLLED.**



103

103

BLB Goodview Hunter 19H

Homo Polled CDGV172903 BLB 19H 01/02/2020

SIREDAM

JRI GUNG HO 282C51

SLC OUTBACK 142X

FLAD FLAD FLADELAND ELEMENT 21E**BLB GOODVIEW PLD MAXINE**

FLAD FLADELAND SADIE 28X

BLB GOODVIEW PLD MAXINE 10Z

BW	OCT. 5 WT	ADJ. 365 WT	GEST (DAYS)
74	784	1200	279

EPDS	CE	BW	WW	YW	MK	TM
	18	-4.6	45	65	22	45

BLB Hunter 19H is the sleep easy heifer bull in the offering. A BW EPD in the 1% and CE in the 2% of the breed. Sired by FLAD Element 21E who we have used successfully on our heifers this calving season. BLB 19H has an Outback sired dam, BLB Maxine 47E who is leaving her mark in our program. The Maxine family are a multi generation calving ease family. 47E is a full sibling to BLB Drake 146D who left his mark at Twinview Livestock. Heifer bull. **HOMO POLLED.**



104

104

BLB Goodview Harley 16H

Homo Polled CDGV172900 BLB 16H 29/01/2020

SIREDAM

SLC SLC STARBUCKS 62B

JRI GUNG HO 282C51

BLB GOODVIEW PLD EATON**FLAD FLADELAND FLURRY 50F**

PHG PRAIRIE CARRIE C75

FLAD FLADELAND MIDNIGHT 102Y

BW	OCT. 5 WT	ADJ. 365 WT	GEST (DAYS)
64	835	1277	285

EPDS	CE	BW	WW	YW	MK	TM
	15	-0.1	55	81	15	43

BLB Harley 16H is another heifer bull candidate. Sired by BLB Eaton 35E who sires cattle that exhibit a lot of muscle expression and daughters with nice neat udders. Look for 16H to sire calves that are curve benders from birth to weaning. Heifer bull. **HOMO POLLED.**

105**BLB Goodview Hudson 32H**

Homo Polled CDGV172917 BLB 32H 26/02/2020

SIREDAM

SLC SLC STARBUCKS 62B SLC OUTBACK 142X
 BLB GOODVIEW PLD EATON BLB GOODVIEW PLD WILMA
 PHG PRAIRIE CARRIE C75 BLB GOODVIEW PLD WILMA 1Y

BW	OCT. 5 WT	ADJ. 365 WT	GEST (DAYS)
84	787	1201	284

EPDS	CE	BW	WW	YW	MK	TM
	14	-0.8	52	69	19	45

BLB Hudson 32H is another BLB Eaton son that will work as a dual-purpose herd sire. His dam, BLB Wilma 55C is another Outback sired female from the very productive Wilma family. BW moderator. **HOMO POLLED.**

**105**

Gelbvieh

106**BLB Goodview Hugh 37H**

Homo Polled CDGV172922 BLB 37H 08/03/2020

SIREDAM

JRI GUNG HO 282C51 SLC SLC STARBUCKS 62B
 FLAD FLAD FLADELAND ELEMENT 21E BLB GOODVIEW PLD BROOK
 FLAD FLADELAND SADIE 28X ZTM MCCOY 66W BROOK 71Y

BW	OCT. 5 WT	ADJ. 365 WT	GEST (DAYS)
78	725	1251	280

EPDS	CE	BW	WW	YW	MK	TM
	16	-1.7	55	79	20	48

BLB Hugh 37H exhibits a lot of muscle in his quarter while being smooth through the shoulder. BW moderator. **HOMO POLLED.**

**106****107****BLB Goodview Harvester 14H**

Homo Polled CDGV172898 BLB 14H 27/01/2020

SIREDAM

JRI GUNG HO 282C51 SLC SLC STARBUCKS 62B
 FLAD FLAD FLADELAND ELEMENT 21E BLB GOODVIEW PLD CHRISTINE
 FLAD FLADELAND SADIE 28X BLB GOODVIEW PLD CHRISTINE

BW	OCT. 5 WT	ADJ. 365 WT	GEST (DAYS)
82	824	1221	282

EPDS	CE	BW	WW	YW	MK	TM
	16	-2.2	53	80	22	48

BLB Harvester 14H is long spined with a big hip. Sired by FLAD Element and born to a neat uddered Starbucks 62B daughter. BW moderator. **HOMO POLLED.**

**107**



BLB Hardbody 13H has power front to back. He is the first of five power cow bulls. Look for this guy to add pounds to your calves come fall.

108

108 BLB Goodview **Hardbody** 13H

Polled CDGV171436 BLB 13H 26/01/2020

SIRE

AWB BIRCH'S THE BOXER 21D
AWB TWIN VIEW MAYWEATHER 39F ET
AWB BIRCH'S NATALIE 22Z

DAM

FRL FIR RIVER BIG'N'RICH 438Y
AWB TWIN VIEW FAITHFUL 17F
AWB BIRCH'S FAITHFUL 39D

BW	OCT. 5 WT	ADJ. 365 WT	GEST (DAYS)
98	899	1393	283

EPDS	CE	BW	WW	YW	MK	TM
	11	0.9	67	96	23	56

109 BLB Goodview **High Caliber** 17H

Homo Polled CDGV172901 BLB 17H 30/01/2020

SIRE

JRI GUNG HO 282C51
FLAD FLAD FLADELAND ELEMENT 21E
FLAD FLADELAND SADIE 28X

DAM

SLC OUTBACK 142X
BLB GOODVIEW PLD MAUREEN ET
BBB BROOK MAUREEN 107M

BW	OCT. 5 WT	ADJ. 365 WT	GEST (DAYS)
92	898	1284	285

EPDS	CE	BW	WW	YW	MK	TM
	11	-0.1	57	84	21	50



BLB High Caliber 17H is a dark red, smooth made bull. A FLAD Element son that catches your eye when you walk into the pen. Look for him to produce fancy daughters and those big pay weight steers. **HOMO POLLED**.

109

110

BLB Goodview Heston 25H

Homo Polled CDGV172909 BLB 25H 14/02/2020

SIRE

DAM

JRI GUNG HO 282C51

ATC GOLD STAR POLLED 5D

FLAD FLAD FLADELAND ELEMENT 21E SA BIRCH'S TAMMY 42B

FLAD FLADELAND SADIE 28X SA BIRCH'S TAMMY 155Z

BW	OCT. 5 WT	ADJ. 365 WT	GEST (DAYS)
82	883	1304	275

EPDS	CE	BW	WW	YW	MK	TM
	14	-1.3	60	91	20	50

BLB Heston 25H is another soft made Element son that will add pounds to your calves in the fall. **HOMO POLLED.**



111

BLB Goodview Hulk 31H

Homo Polled CDGV172916 BLB 31H 24/02/2020

SIRE

DAM

SLC SLC STARBUCKS 62B

SLC OUTBACK 142X

BLB GOODVIEW PLD EATON BLB GOODVIEW PLD FANTASIA

PHG PRAIRIE CARRIE C75 BLB GOODVIEW PD FANTASIA 37X

BW	OCT. 5 WT	ADJ. 365 WT	GEST (DAYS)
104	890	1398	289

EPDS	CE	BW	WW	YW	MK	TM
	9	2.4	65	96	22	54

BLB Hulk 31H is a BLB Eaton sired bull that will also sire those big calves come fall. **HOMO POLLED.**



BLB Goodview PLD Eaton

Sire of Lots 104, 105, 111 & 112

112

BLB Goodview Hawkeye 39H

Homo Polled CDGV172924 BLB 39H 10/03/2020

SIRE

DAM

SLC SLC STARBUCKS 62B

SLC SLC 202A

BLB GOODVIEW PLD EATON BLB GOODVIEW PLD CHRISTINE

PHG PRAIRIE CARRIE C75 BLB GOODVIEW PLD CHRISTINE

BW	OCT. 5 WT	ADJ. 365 WT	GEST (DAYS)
105	839	1426	289

EPDS	CE	BW	WW	YW	MK	TM
	9	2.6	67	99	17	50

BLB Hawkeye 39H is the youngest bull in our offering yet boasts the second highest gain and third for WDA of 4 lbs. He has a lot of everything such as hair, hip, rib shape and performance. He will get your attention. **HOMO POLLED.**



Notes

Terms and Conditions

Terms:

The terms of the sale are cash or cheque, payable at par at the sale location. The right of property shall not pass until after settlement has been made; no invoicing on buyers in attendance, unless previous arrangements have been made. Every animal sells to the highest bidder and in cases of disputes, the auctioneer's decision will be final. Current exchange rates will be announced sale day. All monies are in Canadian funds.

Bidding:

Each animal will sell to the highest bidder. In the case of a dispute, bidding will be reopened between the parties involved in the dispute. If no further bidding is made, the buyer will be the person from whom the auctioneer accepted the last bid. The auctioneer's decision on all disputes will be final.

Announcements:

All announcements made from the auction block will take precedence over the printed matter in the catalogue. Buyers are therefore cautioned to pay close attention to such disclosures.

Breeder's Guarantee:

Should any bull fourteen (14) months of age or over fail to prove a breeder after being used on females known to be breeders, the matter shall be reported in writing to the seller within six (6) months following the date of purchase or six (6) months after the bull has reached fourteen (14) months of age. The seller will have the right and privilege of six (6) months to prove the bull a breeder. No guarantee is given that semen collected from the bull will freeze.

Exception Guarantee:

In cases where the animal is subjected to any hormonal or surgical reproduction techniques after the sale, this guarantee shall be null and void.

Certificate of Registration:

Each animal will carry papers issued by the Canadian Charolais, Angus, Simmental, and Gelbvieh Associations. A certificate of registry duly transferred will be furnished to the buyer for each animal after payment has been made.

Pedigree Estimates

Pedigree Estimates (PE) are created on the projected mating of the animal's sire and dam based on averages of the two, creating estimated values that do not hold the same accuracy of actual EPDs issued from the association and should be used as such.

Health:

All animals in the sale have met all necessary health requirements.

Liabilities:

All persons attend the sale at their own risk. The seller, facility owner and sale manager assume no liability, legal or otherwise, for any accidents that occur. It is understood that T Bar C Cattle Co. (2013) Ltd. is acting only as a medium between buyer and seller and is not responsible for any failure on the part of either party to live up to his obligations. Neither does T Bar C Cattle Co. (2013) Ltd. assume any financial obligations to collect or enforce collection of any monies between parties and any legal action that may in exceptional cases be taken must be between the buyer and the seller. T Bar C Cattle Co. (2013) Ltd. assumes no responsibility for any credit extended by the seller to the buyer. The buyer must look to the seller for fulfillment of all guarantees and representations made here under.

Rights & Obligations:

The above terms and conditions of the sale shall constitute a contract between the buyer and seller and be equally binding to both. Resale of animals following purchase in this sale shall constitute a separate transaction and the rights and obligations of the two parties connected thereto are not covered by the terms and conditions of this sale.

Phone, Mail, Wire Bids:

Bidders unable to attend the sale may phone, wire or mail their bids and instructions to the sale managers, auctioneer or special representatives. Bids must be received in sufficient time prior to the sale.

Delivery:

We will assist in making transportation arrangements outside MB and SK. All costs are the responsibility of the buyer. You may be asked to take your bull early if the truck is in your area. Each animal becomes the risk of the purchaser as soon as sold.

Insurance:

Will be available sale day. We strongly recommend that insurance is purchased for full value.

Errors:

All announcements at sale time, written or oral, supersede any written material in the catalogue.

Thank you to our sponsor of the Buyer's Draw



Thank you to our 2020 Buyers and Bidders...

Addis Farms Ltd.
Albert Bamford
Alberts Homestead Farm
Barry Wourms
Benko Land & Cattle
Bert DeGooijer
Black View Angus
Brian Blight
Buick Farms Ltd.
Burback Farms Inc.
Byron Johnson
Carter Cyhla
Christopher Schwartz
Circle C Ranch
Cole Degelman
Colin Baber
Czech V7 Ranches
Dale Atkinson
Dave Marsh
Don Stecyk
Donavon Cody Block Farms
Double T Simmentals
Dudgeon-Snobelen Land & Cattle
Dwane Hardynal
Dwayne Burback
Dwayne Gebhart
Elwood Turner

Evan Mann
Fergus Galloway
Flaman Cattle Co.
G & L Farms Inc.
Hartland Farms
Hidden Creek
Hillstead Farm Ltd.
Hunter Charolais
Irvine Wessing
Jason Lasota
Jeff Fogg
John Barsi
Justin & Kathy Kerr
Justin Holodniuk
K3 Ag.
Keegan Benko
Keith & Jodi Blight
KenRay Stock Farm
Kings Corner Farms
Korchinski Farm
Kyle Loveridge
Lana Graham
Laurier Grazing Corp.
Lindsay Horvath
M & B Coulter
Mandy Mann
Marvin Lang
McCoy Cattle Co.

Murray Bowes
Nicole Karapita
Orthner Land & Cattle Ltd.
Paul Valstar
Prairie Hills Genetics
Ralph Stachura
Randy Zaremba
Rick & Jen Stettner
Ridge Road Charolais
Ringstead Ranch
Rodney McLean
Ryan Torrie
S & A Frericks Farms
Shawn Tamme
Sheldon Popadynech
Shirley Semenovoff
Teale Farms
Tilson Creek Farms
Tom Stachura
Tradewind Charolais
Trevor Orsten
Trevor Robb
Troy Kitz
Warren & Charlotte Ward
Wayde Yewsuk
Wayne Prokopchuk
Wunder Farms



Return Undeliverable
Canadian Addresses To:

T Bar C Cattle Co. Ltd.
Box 2330
Warman, SK S0K 4S0



Created by:

